



# Product Specifications

## Model: DSP-A1 & DSS-A1 (Stainless Steel) Inside Corner Wall-Mounted Sleeve

The Pelsue Models #DSP-A1 & #DSS-A1 Corner Sleeves are designed to be installed on an existing wall corner. The mounting surface must be substantial enough in order to withstand the proofing loads reported within this document. The DSP-A1 & DSS-A1 Corner Sleeve can be bolted or welded to a steel surface or fastened to a concrete surface with appropriate concrete fasteners. When installed, each of the sleeves provides a fixed receiver for any PELSUE Brand offset arm or davit system. The DSS or Stainless Steel version of the sleeve provides additional durability in a corrosive environment.

### General Specifications:

**Product is designed and tested to be used in 2 General Applications:**

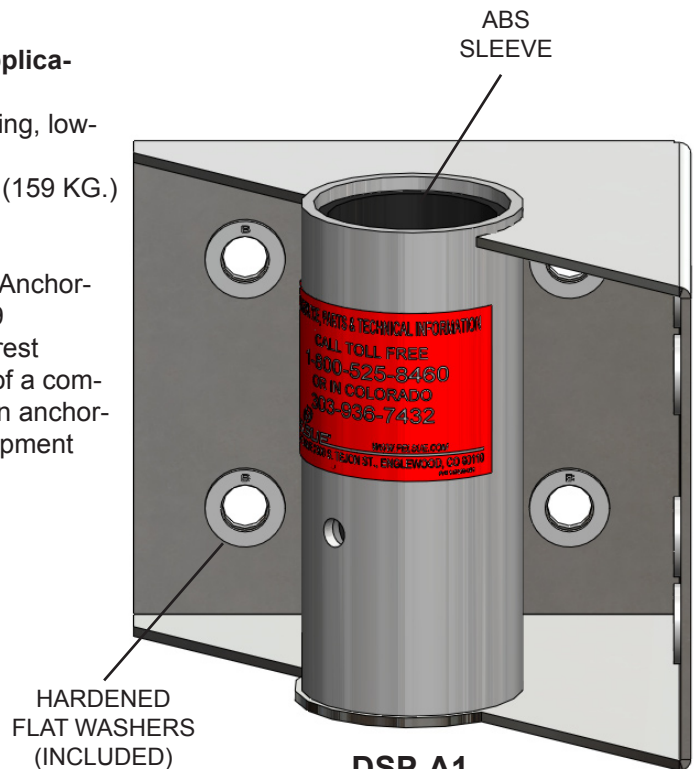
1. As an offset davit system to be utilized as a personnel lifting, lowering, positioning, and/or confined space retrieval device.  
**Man Rated Load Capacity.....**Single user of **350 LBS.** (159 KG.)  
Maximum Weight
2. As an anchorage for personal fall arrest systems.  
**Compliance.....**Designed and tested as a Fall Arrest Anchorage for one person as per ANSI Z359  
**Warning!** A 900 LB. maximum arrest force (MAF) fall arrest device must be used when system is employed as part of a complete fall arrest system. Maximum weight of person upon anchorage is **350 LBS. (159 KG.)** inclusive of all tools and equipment

### Materials & Construction:

- General Construction..... Welded Steel**
- DSP-A1 .....Plated Steel
  - DSS-A1 .....Stainless Steel
  - Anti-Friction Components .....ABS Plastic Friction Sleeve & PVC Slip Plate

### Weight:

**Weight.....**21 LBS. (9.5 Kg)



**DSP-A1**  
**Isometric View**

### Mounting Requirements:

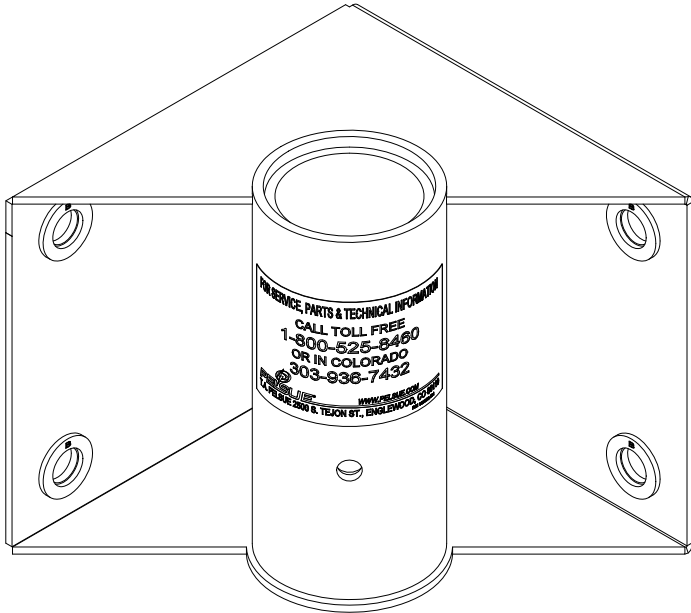
- Metal Structure: Secure with 3/4" UNC SAE Grade 5 (ASTM A325) or better threaded fasteners and included 3/4" Hardened flat washers. Ensure that supporting structure will withstand tensile working loads in each bolt of 4100 Lb. (18.3 kN) and shear working loads in each bolt of 3200 Lb. (14.3 kN) with at least a 2:1 Factor of Safety.
- Concrete: Install Using concrete wedge-type anchors with reported tensile & shear working strengths of at least 4100 Lb. (18.3 kN) and 3200 Lb. (14.3 kN) respectively with at least a 4:1 Factor of Safety. Concrete Strength & thickness must be sufficient in order to meet or exceed the fastener manufacturer's guidelines. \*\*Contact Pelsue for additional assistance.



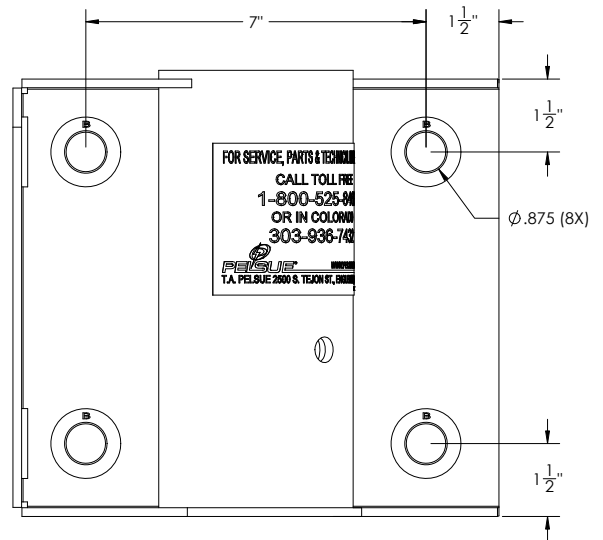
2500 S. Tejon St.  
Englewood, CO 80110  
Ph: 1-800-525-8460, (303) 936-7432  
Fax: (303)934-5581  
Web: [www.pelsue.com](http://www.pelsue.com) E-mail: [sales@pelsue.com](mailto:sales@pelsue.com)



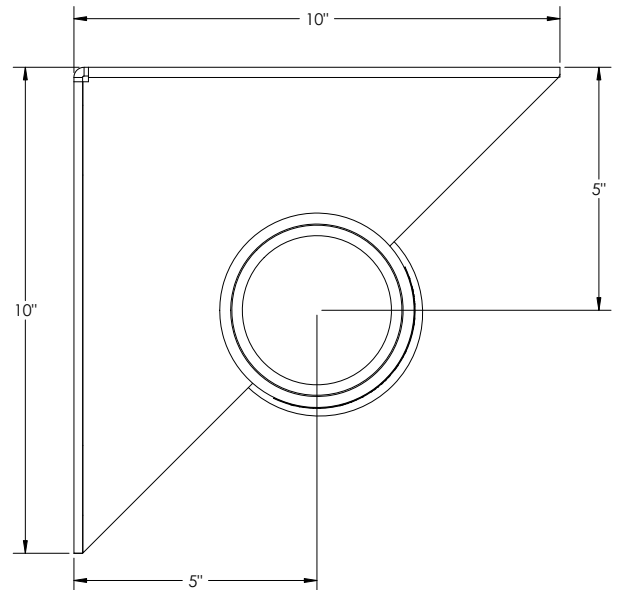
# Product Specifications



DIMETRIC VIEW



SIDE VIEW



TOP VIEW



2500 S. Tejon St.  
 Englewood, CO 80110  
 Ph: 1-800-525-8460, (303) 936-7432  
 Fax: (303)934-5581  
 Web: [www.pelsue.com](http://www.pelsue.com) E-mail: [sales@pelsue.com](mailto:sales@pelsue.com)