

**MOBILE FALL ARRESTER  
ON ANCHORAGE SUPPORT**  
Conform to the norm  
**EN 353-1 and/or EN353-2**

**IMPORTANT POINTS**

You have just acquired Personal Protective Equipment (PPE) and we thank you for your confidence. In order for this product to meet all your requirements, we ask you **BEFORE EACH USE**, to follow the instructions in this manual.

Disregarding the instructions described in this manual could give rise to some serious repercussions. We advise that you re-read these instructions from time to time. In addition, the Supplier or his agent declines all responsibility for any use, storage methods or maintenance carried out in any other manner than that described in this manual.

**IF THE BUYER IS NOT THE END USER, IT IS IMPORTANT THAT THESE INSTRUCTIONS ARE GIVEN TO THE LATTER.**

Check that the PPE you have acquired is compatible with the recommendations of all other components of the fall arrest system. It is necessary to be completely sure before use that the recommendations specific to each element associated with this product, such as defined in their instructions, are respected. Whenever possible, it is strongly advised to personally attribute the PPE to an individual user. While in use, protect your PPE against all risks connected with the work environment: thermal, electrical or mechanical shocks, acid discharges, etc...

**ATTENTION**

Activities at height are dangerous and can bring about serious accidents and injuries. We remind that you are personally responsible in the case of an accident, injury or fatality to either yourself or a third party during or following the use of one of our products. The use of our products is reserved for competent people, who have gone through the proper training or who are operating under the supervision and instruction of a competent and experienced person. Ensure that you have been adequately trained in the use of this PPE and make sure that you have fully understood how it works. If there is any doubt, do not take any risks but seek advice. A good physical condition is obligatory in order to carry out work from a height.

**USER AND MAINTENANCE MANUAL**

**USE**

The slide is a mobile fall arrester sliding along a the specific anchorage support of the same MAKE. It is used for safely ascending and descending building facades, frameworks, roofs, towers etc.  
In the event of fall, it will lock instantly on the support.

**CONNECTION**

The slide must be used with a fall arrest harness (cf. EN 361). It must never be used with a work positioning system (belts). It must be connected to the harness **EXCLUSIVELY** using the connector supplied.

**NEVER ADD AN ADDITIONAL LINKING ELEMENT BETWEEN THE SLIDE AND THE HARNESS**

**INSTALLATION**

Attach the end of the anchorage support (rope or cable) to the anchorage point using a connector in conformity with standard (EN 362). If possible, weight or attach the other end of the anchorage support. If it becomes necessary to open the slide so as to fit it to the support, operate as shown by the diagrams concerning your fall arrester. In addition, for units with two operating positions (slide/lock), make the change in a safe position.

Important recommendations :

When a manual fall arrester (or a fall arrester in the manual position) is being used, the bottom end of the rope must be attached or heavily weighted. Check the compatibility of the fall arrester with the anchorage support. Any equipment that has contributed to arresting a fall or on which visual and functional examination leaves a doubt, must be removed from service immediately. Allow a minimum 3 m air clearance under the user.

Before bringing into use.

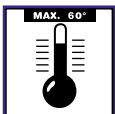
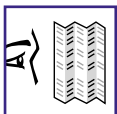
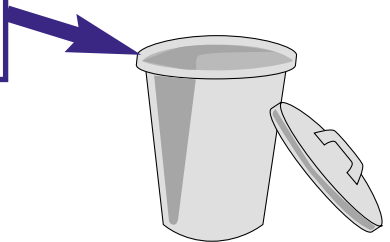
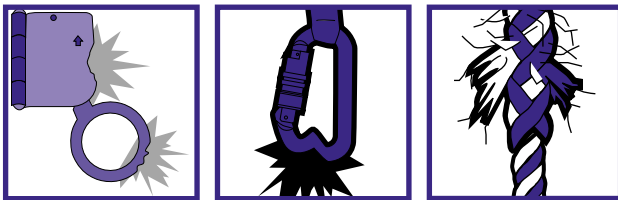
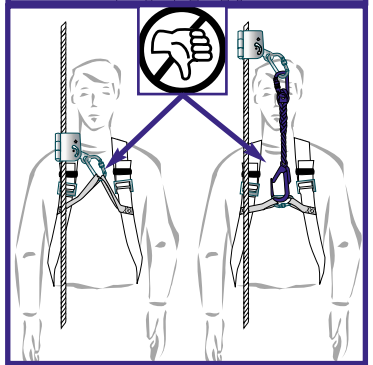
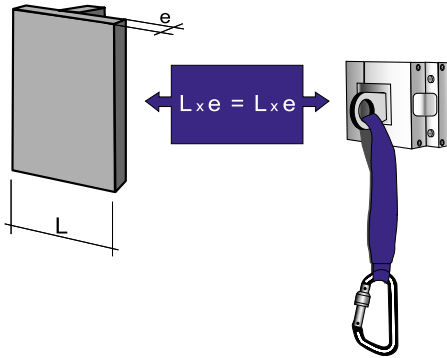
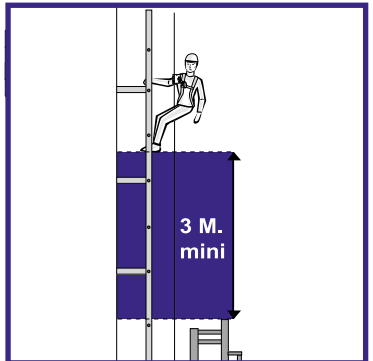
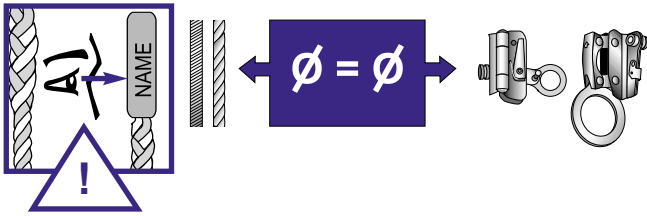
Check the following points with care:

- Correct and complete closure of the slide,
- Securing of the locking cam,
- General appearance of the anchorage line and more particularly its amount of wear,
- Integrity of the termination,
- Correct operation of the carabiners,
- Absence of signs of corrosion or deformation.

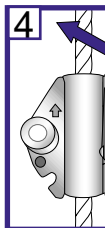
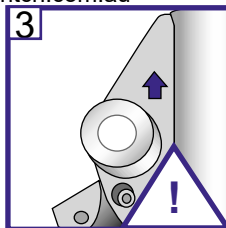
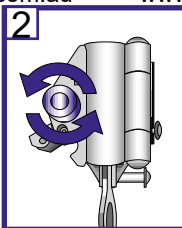
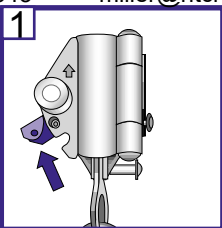
Important recommendations :

Before each use, it is advisable to carry out an in-depth visual examination in order to assure the integrity of the

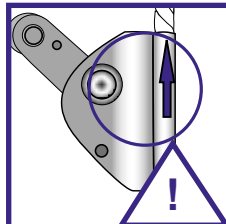
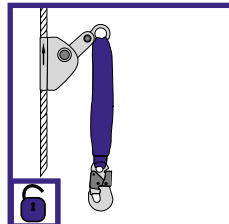
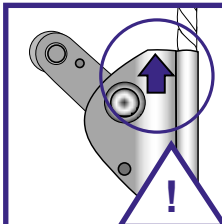
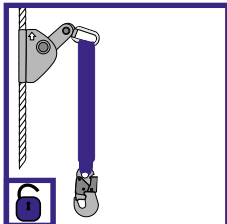
# EN 353-1 / EN 353-2



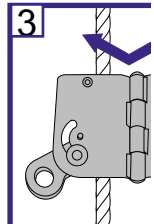
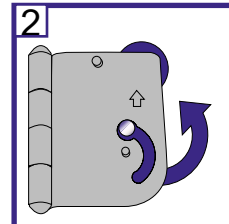
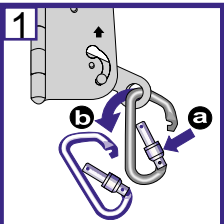
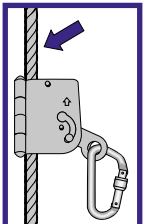
EN 353-2



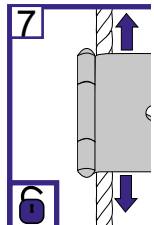
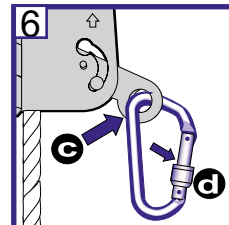
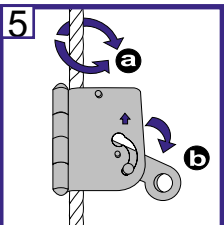
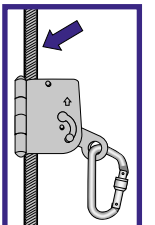
EN 353-2



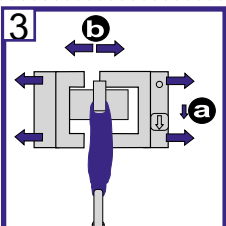
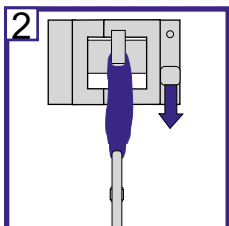
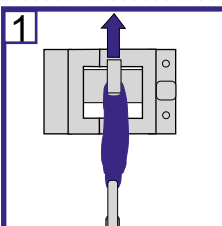
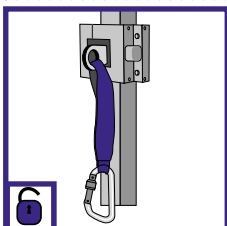
EN 353-2



EN 353-1  
EN 353-2



EN 353-1



EN 353-2

