





LIFELINE CATALOGUE



-  ROOF ANCHORS
-  LIFELINE SYSTEMS
-  PERMANENT LADDERS
-  LADDER STABILISERS



< Y][\ hYW 'GUZYhmGmghYa g
AU: 1, 00 +&' ' ('

cfXYfg@\ Y][\ hYW gUZYhm.com

''k k k "\ Y][\ hYW gUZYhmVta "Ui

Table of Contents

SAFETYLINK ACCESSORIES	4
CERTIFICATION LABEL	4
WARNING SIGN	4
BRASS CAP/BOLT	4
STROPS	5
CRIMPING TOOLS	5
RIVETING TOOLS	6
HYDRAJAWS TESTERS	7
LADDER STABILIZERS	8
LIFELINE SYSTEM – Swageless Terminals	9
LIFELINE SYSTEM – Crimp On Terminals	9
LIFELINE SYSTEM – Swaged Terminals	10
LIFELINE SYSTEM – Cable & Bracing	10
LIFELINE SYSTEM – Shuttles	11
HORIZONTAL LIFELINE – FROGLINE SURFACE MOUNT	12
FROGLINE SURFACE MOUNT INTERMEDIATE	12
FROGLINE SURFACE MOUNT END	12
FROGLINE SURFACE MOUNT CORNER	12
HORIZONTAL LIFELINE – FROGLINE CONCRETE	13
FROGLINE CONCRETE INTERMEDIATE	13
FROGLINE CONCRETE END	13
FROGLINE CONCRETE CORNER	13
HORIZONTAL LIFELINE – FROGLINE RETRO	14
FROGLINE RETRO INTERMEDIATE	14
FROGLINE RETRO END	14
FROGLINE RETRO CORNER	14
HORIZONTAL LIFELINE – FROGLINE STEEL	15
FROGLINE STEEL INTERMEDIATE	15
FROGLINE STEEL END	15
FROGLINE STEEL CORNER	15
HORIZONTAL LIFELINE – CLASSIC SURFACELINK	16
HORIZONTAL LIFELINE – CLASSIC CONCRETELINK	17
HORIZONTAL LIFELINE – CLASSIC RETROLINK	18
HORIZONTAL LIFELINE – CLASSIC RAFTERLINK	19
HORIZONTAL LIFELINE – CLASSIC SINGLE ANCHOR	20
HORIZONTAL LIFELINE – CLASSIC WALL/CEILING MOUNT	21
STANDARD TERMS AND CONDITIONS OF SALE	22
EXPERT FALL PROTECTION PLANNING	26
SAFETYLINK ANCHOR PRODUCT RANGE	27

SafetyLink Pty Ltd has been operating as a manufacturer of Height Safety equipment for over a decade. Our product range includes anchors, static line systems, permanent ladder systems and ladder stabilisers.

Our anchor range includes the SafetyLink Energy Absorbing Eyebolt. This eyebolt was developed and tested extensively to maximize energy absorption while retaining its strength when arresting a fall. The eyebolts tapered design enables it to bend like a fishing pole to reduce the load back on the structure and the person attached to the anchor. This unique energy absorbing quality has been incorporated into SafetyLink anchors.

The **SafetyLink Energy Absorbing Eyebolt** is available in purpose built designs.

The **Standard/SurfaceLink Eyebolt** is designed for fall arrest, the eyebolt's long tapered stem is designed to absorb energy while arresting a fall therefore reducing the load off the structure and the person. To maximize this design the eyebolt starts to bend at a lower load. The standard eyebolt is not designed for a constant live load.

The **Abseiling Eyebolt** is a fall arrest anchor which uses the same tapered concept as the standard eyebolt but incorporates a broader design enabling the eyebolt to withstand a live load without activating the bending motion that occurs when arresting a fall. The Standard and Abseiling eyebolts have been tested to over 24kN force.

The **SafetyLink Lifeline** range uses the same tapered principle to ensure all end anchors and intermediates have the same energy absorbing capabilities. Our streamlined design ensures traversing across a surface with our pass through intermediates a safe and simple task.

Based on the sound engineering principles of the patented FrogLink anchor point, SafetyLink's all **NEW** patented **FrogLine Horizontal Lifeline** is in a class of its own. The FrogLine's low profile design combines effortless energy absorbing capabilities into every intermediate, end and corner anchor, consequently incorporating the line energy absorbers into the system. This simplistic approach ensures our FrogLine systems are installed with all the necessary components regardless of length.

The FrogLine's curved profile, while smart in its simplicity provides the initial shock absorbing capabilities in the event of a fall. Further extension is provided in the serpentine shapes which progressively dissipate and absorb the energy whilst retaining their strength. This duality of function is why the FrogLine design surpasses all its competitors in the field.

Innovation and attention to detail is always foremost in our minds when designing new products. The FrogLine's lifeline demonstrates this with its intricate tab features. These tabs provide stability whilst the line is in tension, in addition to this they act as a fall indicator when removed from their initial position. Designed with a variety of interchangeable components, the FrogLine is capable of being installed into a multitude of situations including metal roof sheeting, purlins, steel beams and concrete structures.




The **FrogLine** has been rigorously tested and manufactured in accordance with Australia and New Zealand Standard AS/NZS 1891.2 and European EN 795:2012, CEN/TS 16415:2013.

SafetyLink products can be attached to a number of different surfaces such as steel purlins, timber rafters, concrete and metal roof sheeting. Typical uses of SafetyLink products include trades people working at heights on buildings and building sites in the following situations:

- › Installation of roofing
- › Installation and dismantling of safety rails
- › Solar heating, electrical and plumbing work
- › State emergency service personnel
- › Repairing damaged roofing, general roof and building maintenance
- › Air conditioning, roof ventilation, TV aerials and satellite dishes
- › Cleaning at heights

All SafetyLink products undergo extensive testing in a multitude of scenarios and our experienced technical support team is complemented with comprehensive installation manuals.

WARNING - ANY INSTALLATION OF HEIGHT SAFETY COMPONENTS/PRODUCTS MUST BE CARRIED OUT BY A COMPETENT PERSON. PERSON/S MUST BE SAFE AT ALL TIMES. READ ENTIRE HANDBOOK BEFORE USING ANY SAFETYLINK PRODUCT. FAILURE TO FOLLOW ALL WARNINGS AND INSTRUCTIONS MAY RESULT IN A SERIOUS INJURY OR DEATH.

-  **STANDARD EYEBOLTS MUST ONLY BE USED AS A FALL ARREST ANCHOR.**
-  **ABSEILING EYEBOLTS ARE TO BE USED FOR ROPE ACCESS (ABSEILING & FALL ARREST).**
-  **SURFACE MOUNTED ANCHORS MUST NOT BE USED FOR ROPE ACCESS (ABSEILING).**

SAFETYLINK ACCESSORIES

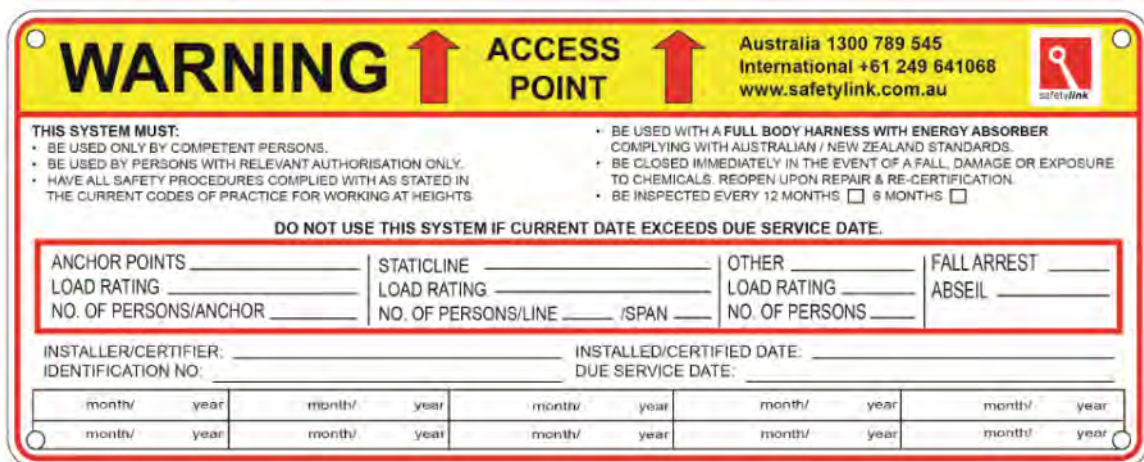
CERTIFICATION LABEL



Product Code: LABEL001

- Packet of 100 - To be used for marking each individual anchor point for certification purposes.
- Labels contain serial numbers for use in computer tracking systems.

WARNING SIGN



Product Code: WARN001

- SafetyLink Warning Sign - Essential entry point information for safety system.

BRASS CAP/BOLT



Product Code: CONCL006

- Brass bolt for use with concrete inserts.
- Protects inner thread section while not in use.

STROPS

STROP



- 1 metre Strop - Product Code: STROP001
- 2 metre Strop - Product Code: STROP002
- 3 metre Strop - Product Code: STROP003
- 4 metre Strop - Product Code: STROP004
- 5 metre Strop - Product Code: STROP005

- Used as **first man up system**; reduces amount of step anchors required.
- Quicklink must be attached to a load rating anchor.
- Attachment end should be secured with a strop hook when not in use to ensure it can be accessed from a safe area for next use.
- Cable coated in PVC.
- Contact SafetyLink for other lengths.

Product Code: STROPHOOK

STROP HOOK



- To be used with the first man up system.
- Secures the attachment point of the strop when not in use, ensuring wind cannot blow the strop away from access point.
- Please note this is not a load rated anchor, only to be used as an accessory to secure the strop.
- Hook can be secured with 2 screws or 2 rivets.

CRIMPING TOOLS

DIE



Product Code: STAT.CRIMP001

- Die for 8mm cable for battery powered crimping tool.
- For use with STAT.TENSR003, STAT.TENSR005 and STAT.TERMN003.

CRIMPING TOOL



Product Code: STAT.CRIMP009

- Battery powered Crimping Tool.
- Able to rotate for different working positions.
- Battery capacity indicator (LED).
- Comes with carry case, charger and two batteries.
- EXTRA DIE REQUIRED TO CRIMP 8MM CABLE: Product code: STAT.CRIMP001 Die (use with STAT.TENSR003, STAT.TENSR005 & STAT.TERMN003)

RIVETING TOOLS

GESIPA RIVETING TOOL

Product Code: GESIPA001.01



- Gesipa Powerbird BT Cordless Rivet Tool. Includes extra battery with carry case.
- Used in conjunction with Gesipa Bulbtite Rivets, RV6605-9-6W (Drill Size 7.8-8.2mm, 7.7 x 27.7mm length, 1.0-9.5mm grip range).

GESIPA HAND RIVET TOOL

Product Code: GESIPA001.02



- Gesipa Hand Rivet Tool, used in conjunction with Gesipa Bulbtite Rivets.

GESIPA NOSE PIECE

Product Code: STAT.CRIMP010



- Nose Piece: 9/32BT Side eject nose assembly & adaptor.
- Used in conjunction with Gesipa Bulbtite Rivets.
- Eliminate swarf contamination within the tool = Prevents possible damage to the nose/jaw assembly and saves time in cleaning.

GESIPA RIVETS

Product Code: GESIPA001.03



- Aluminium Gesipa Bulbtite Rivets, RV6605-9-6W
- (Drill Size 7.8-8.2mm, 7.7 x 27.7mm length rivet, 1.0-9.5mm grip range).
- Click to Buy Online - ([Bag 100](#)) or ([Box 1000](#))

HYDRAJAWS TESTERS

HYDRAJAWS SAFETY EYEBOLT AND RINGBOLT TESTER KIT MK11 (EXPORT MODEL)

Product code: TESTER001



- Model 2000 Medium Duty Fixing Testers - enabling engineers to confirm the holding power of anchors in most construction materials.
- The Model 2000 Eye Bolt Kit comprises the necessary accessories to enable the pull test of common eye bolt and ring bolt fixings.
- EXPORT MODELS: All export kits are fitted with a hydraulic tester body coupler, gauge couplers and an oil bottle with coupler.

HYDRAJAWS COMBINED UNIVERSAL SAFETY LIFELINE FRAME, TESTER & ACCESSORIES KIT 2

Product code: TESTER003



- Hydrajaws Safety Lifeline Anchor Tester clamps directly to the 8mm wire rope and will test all the swaged components during installation.
- The tester is supplied with all necessary accessories to enable the operator to test existing installations including those with long terminating assemblies without any additional parts having to be used.

HYDRAJAWS MEDIUM DUTY MODEL 2000 DELUXE MASTER KIT

Product code: TESTER004



- Supplied with two detachable gauges includes button adaptors to connect to sizes M4, M5, M6, M8, M10 & M12.
- Customers can select to expand the capabilities of their 'Deluxe' tester by adding such optional accessories as M16 and M20 Threaded Stud Adaptors or an M12 Ringbolt Adaptor Clevis and 75mm Hex Extension Legs for testing eyebolts and ringbolts.

LADDER STABILIZERS

LADDERLINK

Product Code: LADFX001



- Made from marine grade aluminium.
- Quick and easy installation.
- Essential entry point system to stabilise your ladder.

What am I used for?

The LadderLink stabilises your ladder preventing side way movement & therefore holding your ladder in place.



LADDERLINK (EXTENDED)

Product Code: LADFX002



- To extend beyond box gutters and larger areas.
- Made from marine grade aluminium.
- 980mm gutter to end, overall length 1115mm.

What am I used for?

Essential entry point system to any height safety system, the LadderLink stabilises your ladder preventing sideways movement and therefore holding your ladder in place. Quick and easy installation.

LADDERLINK (WALL BRACKET)

Product Code: LADFX003



- Wall mounted ladder bracket, fixes directly onto wall.
- Made from marine grade aluminium.

What am I used for?

Essential entry point system to any height safety system, the LadderLink stabilises your ladder preventing sideways movement and therefore holding your ladder in place. Quick and easy installation.

ROPE GUIDE BRACKET

Product Code: LADFX007



- Made from marine grade aluminium.
- Guides your ropes & protects your ropes being damaged when abseiling over a sharp edge or gutter.
- One person user, easy to install and non-obtrusive.

What am I used for?

Protects the guttering systems from rope pressure and damage. Can be permanently installed or removed after use.

LIFELINE SYSTEM – Swageless Terminals

SWAGELESS LIFELINE TERMINALS

SWAGELESS TERMINATION

Product Code: STAT.TERMN002



- For use on Lifeline, affords simple termination.
- Stainless steel construction.
- Suits 8mm Cable.

SWAGELESS TENSIONER

Product Code: STAT.TENSR002



- For use on Lifeline, affords simple installation.
- Stainless steel construction.
- Suits 8mm Cable.

SWAGELESS TENSIONER WITH TENSION INDICATOR

Product Code: STAT.TENSR004



- For use on Lifeline.
- Compact design for easy installation.
- Stainless steel construction tension fork indicator.
- Pre-Tension indicator disk frees at 800n.
- Suits 8mm cable.

LIFELINE SYSTEM – Crimp On Terminals

CRIMP ON LIFELINE TERMINALS

CRIMP ON TERMINATION

Product Code: STAT.TERMN003



- For use with battery powered crimping tool.
- Stainless Steel construction.
- Suits 8mm Cable.

CRIMP ON TENSIONER

Product Code: STAT.TENSR003



- For use with battery powered crimping tool.
- Stainless steel construction.
- Suits 8mm Cable.

CRIMP ON TENSIONER WITH TENSION INDICATOR

Product Code: STAT.TENSR005



- For use with battery powered crimping tool.
- Compact design for easy installation on Lifelines, suits 8mm cable.
- Stainless steel construction tension fork indicator.
- Pre-Tension indicator disk frees at 800n.

READ INSTALLATION HANDBOOK BEFORE INSTALLING ANY SAFETYLINK PRODUCT * HANDBOOKS & PRODUCT SHEETS @ www.safetylink.com

LIFELINE SYSTEM – Swaged Terminals

SWAGED LIFELINE TERMINALS

SWAGED TERMINATION

Product Code: STAT.TERMN001



- Requires a swaging machine.
- For use on Lifeline Systems.
- Stainless steel construction.
- Suits 8mm Cable.

SWAGED TENSIONER

Product Code: STAT.TENSR001



- Requires a swaging machine.
- For use on Lifeline Systems.
- Stainless steel construction.
- Suits 8mm Cable.

LIFELINE SYSTEM – Cable & Bracing

CABLE

CABLE - 7 X 7 WIRE ROPE

PER METRE - Product Code: CABLE001
PER ROLL 305m - Product Code: CABLE001.01



- 316 Stainless steel cable.
- 8mm diameter.
- 7 x 7 wire rope.

CABLE

CABLE - 7 X 19 WIRE ROPE

PER ROLL 305m - Product Code: CABLE007.01



- 316 Stainless steel cable.
- 8mm diameter.
- 7 x 19 wire rope.

BRACING

END ANCHOR BRACING STRAP

Product Code: STAT.BRACE001



- Used to brace surface mounted end anchors and corners to prevent laying over caused by flex in roof sheeting as part of a permanent horizontal lifeline system.
- Aluminium construction.
- For use on pitches no greater than 25 degrees.

LIFELINE SYSTEM – Shuttles

SHUTTLE



SAFELINK SHUTTLE/ KARABINER

Product Code: STAT.SHUTL001

- For use on SafetyLink **HORIZONTAL** Lifeline Systems.
- No need to disconnect from Lifeline as it passes easily over Intermediate T Bolts.
- Shuttle: Solid Stainless Steel construction.
- Karabiner - Alloy steel, silver zinc plated.
- Suits 8mm Cable.

SHUTTLE



OVERHEAD SHUTTLE/ KARABINER

Product Code: STAT.SHUTL002

- For use on SafetyLink **OVERHEAD** Lifeline Systems.
- No need to disconnect from Lifeline as it passes easily over Intermediate T Bolts.
- Shuttle: Solid Stainless Steel construction.
- Karabiner - Alloy steel, silver zinc plated.
- Suits 8mm Cable.

SHUTTLE



FROGLINE SHUTTLE WITH KARABINER

Product Code: STAT.SHUTL003

- For use on SafetyLink **HORIZONTAL** Lifeline Systems.
- No need to disconnect from Lifeline as it passes easily over Intermediate Anchor Points.
- Shuttle: Solid Stainless Steel construction.
- Karabiner - Alloy steel, silver zinc plated.
- Suits 8mm Cable.



SHUTTLE - VERTICAL



VERTICAL LIFELINE SHUTTLE WITH KARABINER

Product Code: LADER001.10

- For use on SafetyLink **VERTICAL** Lifeline Systems.
- Shuttle - 316 stainless steel.
- Karabiner - Alloy steel, silver zinc plated.
- Will track up or down with user vertically and self lock when a fall occurs.
- Can be installed/removed mid-line.
- For use on 8mm stainless steel or galvanised wire only.
- Must be used in conjunction with a personal energy absorber.

HORIZONTAL LIFELINE – FROGLINE SURFACE MOUNT

- Energy absorbing lifeline specifically for use with permanent horizontal height safety lifeline systems, to be mounted on the surface of a metal roof profile.
- Suits pitches no greater than 25 degrees. Equipped with an engineered energy absorbing region to minimise loads on users and structures in the event of a fall.
- Constructed entirely of 316 stainless steel with waterproof foam tape.
- The FrogLine has been rigorously tested and manufactured in accordance with Australia and New Zealand Standard AS/NZS 1891.2 and European EN 795:2012, CEN/TS 16415:2013.

FrogLine Use
Video



FROGLINE SURFACE MOUNT INTERMEDIATE

Stainless Steel Plate - Product Code: STAT.FROGSUR001

Aluminium Plate - Product Code: STAT.FROGSAL001

- Energy absorbing horizontal lifeline INTERMEDIATE anchor point.

What am I used for?

An anchor point designed to be mounted on the surface of a metal roof profile as part of a horizontal lifeline system, to limit lifeline span distances to under ten (10) metres. Fitted where access to the underside of the roof structure is difficult to access.

FROGLINE SURFACE MOUNT END

Stainless Steel Plate - Product Code: STAT.FROGSUR002

Aluminium Plate - Product Code: STAT.FROGSAL002

- Energy absorbing horizontal lifeline END anchor point.

What am I used for?

An anchor point designed to be mounted on the surface of a metal roof profile as part of a horizontal lifeline system as attachment points for the cable to start and terminate at. Fitted where access to the underside of the roof structure is difficult to access.

FROGLINE SURFACE MOUNT CORNER

Stainless Steel Plate - Product Code: STAT.FROGSUR003

Aluminium Plate - Product Code: STAT.FROGSAL003

- Energy absorbing horizontal lifeline CORNER anchor point.

What am I used for?

A height safety system anchor point designed to be mounted on the surface of a metal roof profile as part of a horizontal lifeline system. The lifeline cable runs through the corner anchor point re-directing it by up to 90 degrees. Fitted where access to the underside of the roof structure is difficult to access.

SURFACEMOUNT



SURFACEMOUNT



SURFACEMOUNT



HORIZONTAL LIFELINE – FROGLINE CONCRETE

- ❏ Energy absorbing lifeline specifically for use with permanent horizontal height safety lifeline systems into concrete.
- ❏ Must be chemically fastened, constructed entirely of stainless steel.
- ❏ Equipped with an engineered energy absorbing region to minimise loads on users and structures in the event of a fall.
- ❏ The FrogLine has been rigorously tested and manufactured in accordance with Australia and New Zealand Standard AS/NZS 1891.2 and European EN 795:2012, CEN/TS 16415:2013.



CONCRETE



FROGLINE CONCRETE INTERMEDIATE

Product Code: STAT.FROGCON001

- Energy absorbing horizontal lifeline INTERMEDIATE anchor point.

What am I used for?

A height safety system anchor point designed to be mounted into a concrete as part of a horizontal lifeline system to limit lifeline span distances to under ten (10) metres.

CONCRETE



FROGLINE CONCRETE END

Product Code: STAT.FROGCON002

- Energy absorbing horizontal lifeline END anchor point.

What am I used for?

A height safety system anchor point designed to be mounted into a concrete as part of a horizontal lifeline system as attachment points for the cable to start and terminate at.

CONCRETE



FROGLINE CONCRETE CORNER

Product Code: STAT.FROGCON003

- Energy absorbing horizontal lifeline CORNER anchor point.

What am I used for?

A height safety system anchor point designed to be mounted into a concrete as part of a horizontal lifeline system. The lifeline cable runs through the corner anchor point re-directing it by up to 90 degrees.

HORIZONTAL LIFELINE – FROGLINE RETRO

- 🔑 Energy absorbing lifeline specifically for use with permanent horizontal height safety lifeline systems.
- 🔑 Suits roof pitches up to 25 degrees.
- 🔑 Constructed entirely of 316 stainless steel with barrier foam tape.
- 🔑 Designed to be mounted into various metal profile roof sheeting with steel purlin construction.
- 🔑 Equipped with an engineered energy absorbing region to minimise loads on users and structures in the event of a fall.
- 🔑 The FrogLine has been rigorously tested and manufactured in accordance with Australia and New Zealand Standard AS/NZS 1891.2 and European EN 795:2012, CEN/TS 16415:2013.



READ INSTALLATION HANDBOOK BEFORE INSTALLING ANY SAFETYLINK PRODUCT * HANDBOOKS & PRODUCT SHEETS @ www.safetylink.com

RETRO



Product Code: STAT.FROGRET001

- Energy absorbing horizontal lifeline INTERMEDIATE anchor point.

What am I used for?

A height safety system anchor point designed to be mounted into various metal profile roof sheeting with steel purlin construction as part of a horizontal lifeline system, to limit lifeline span distances to under ten (10) metres.

RETRO



Product Code: STAT.FROGRET002

- Energy absorbing horizontal lifeline END anchor point.

What am I used for?

A height safety system anchor point designed to be mounted into a metal roof/steel purlin structures as part of a horizontal lifeline system, as end anchor attachment points for the cable to start and terminate at.

RETRO



Product Code: STAT.FROGRET003

- Energy absorbing horizontal lifeline CORNER anchor point.

What am I used for?

A height safety system anchor point designed to be mounted into a metal roof/steel purlin structures as part of a horizontal lifeline system as a corner anchor point. The life line cable runs through the corner anchor point re-directing it by up to 90 degrees.

HORIZONTAL LIFELINE – FROGLINE STEEL

- Energy absorbing lifeline specifically for use with permanent horizontal height safety lifeline systems.
- Constructed entirely of 316 stainless steel, suits pitches no greater than 25 degrees.
- Designed to be mounted into various metal profile roof sheeting with steel purlin construction.
- Equipped with an engineered energy absorbing region to minimise loads on users and structures in the event of a fall.
- The FrogLine has been rigorously tested and manufactured in accordance with Australia and New Zealand Standard AS/NZS 1891.2 and European EN 795:2012, CEN/TS 16415:2013.



STEEL



FROGLINE STEEL INTERMEDIATE

Product Code: STAT.FROGSTE001

- Energy absorbing horizontal lifeline INTERMEDIATE anchor point.

What am I used for?

A height safety system anchor point designed to be mounted into various metal profile roof sheeting with steel purlin construction as part of a horizontal lifeline system, to limit lifeline span distances to under ten (10) metres.

STEEL



FROGLINE STEEL END

Product Code: STAT.FROGSTE002

- Energy absorbing horizontal lifeline END anchor point.

What am I used for?

A height safety system anchor point designed to be mounted into a metal roof/steel purlin structures as part of a horizontal lifeline system, as end anchor attachment points for the cable to start and terminate at.

STEEL



FROGLINE STEEL CORNER

Product Code: STAT.FROGSTE003

- Energy absorbing horizontal lifeline CORNER anchor point.

What am I used for?

A height safety system anchor point designed to be mounted into a metal roof/steel purlin structures as part of a horizontal lifeline system as a corner anchor point. The life line cable runs through the corner anchor point re-directing it by up to 90 degrees.

HORIZONTAL LIFELINE – CLASSIC SURFACELINK

- Constructed of 316 stainless steel and marine grade aluminium with foam barrier tape.
- Suits a multitude of roof profiles with pitches no greater than 25 degrees.
- Complies with AS/NZS 1891.2.
- Intended for use with 8mm stainless steel cables.
- Equipped with an engineered energy absorbing region to minimise loads on users and structures in the event of a fall.
- Install using (10) ten x Gesipa Bulbtite Rivets.
- Surface mount plate can be purchased in stainless steel, contact SafetyLink for pricing.



CLASSIC SURFACELINK INTERMEDIATE T BOLT

Product Code: STAT.ASURF001

- Energy absorbing horizontal lifeline INTERMEDIATE anchor point.

What am I used for?

A height safety system anchor point designed to be mounted on the surface of a metal roof profile as part of a permanent horizontal lifeline system, to limit lifeline span distances to under ten (10) metres. Fitted where it is difficult to access the underside of the roof.

CLASSIC SURFACELINK END UNIT

Product Code: STAT.ASURF002

- Energy absorbing horizontal lifeline END anchor point.

What am I used for?

A height safety system anchor point designed to be mounted on the surface of a metal roof profile as part of a permanent horizontal lifeline system as attachment points for the cable to start and terminate at. Fitted where it is difficult to access the underside of the roof.

CLASSIC SURFACELINK CORNER UNIT

Product Code: STAT.ASURF003

- Energy absorbing horizontal lifeline CORNER anchor point.

What am I used for?

A height safety system anchor point designed to be mounted on the surface of a metal roof profile as part of a permanent horizontal lifeline system. The lifeline cable runs through the corner anchor point re-directing it by up to 90 degrees. Fitted where it is difficult to access the underside of the roof.

SURFACE MOUNTED



SURFACE MOUNTED



SURFACE MOUNTED



HORIZONTAL LIFELINE – CLASSIC CONCRETELINK

- ☞ Specifically for use with permanent horizontal height safety lifeline systems into concrete.
- ☞ Must be chemically fastened.
- ☞ Constructed of 316 stainless steel.
- ☞ Equipped with an engineered energy absorbing region to minimise loads on users and structures in the event of a fall.
- ☞ Intended for use with 8mm stainless steel cables.
- ☞ Complies with AS/NZS 1891.2.

CONCRETE LIFELINE



CLASSIC CONCRETELINK INTERMEDIATE UNIT

Product Code: STAT.CONCL001

- Energy absorbing horizontal lifeline INTERMEDIATE anchor point.

What am I used for?

A height safety system anchor point designed to be mounted into a concrete structure as part of a permanent horizontal lifeline system to limit lifeline span distances to under ten (10) metres.

CONCRETE LIFELINE



CLASSIC CONCRETELINK SINGLE END UNIT

Product Code: STAT.CONCL006

- Energy absorbing horizontal lifeline END anchor point.

What am I used for?

A height safety system anchor point designed to be mounted into a concrete structure as part of a permanent horizontal lifeline system as end anchor attachment points for the cable to start and terminate at.

CONCRETE LIFELINE



CLASSIC CONCRETELINK SINGLE CORNER UNIT

Product Code: STAT.CONCL007

- Energy absorbing horizontal lifeline CORNER anchor point.

What am I used for?

A height safety system anchor point designed to be mounted into a concrete structure as part of a permanent horizontal lifeline system as a corner anchor point. The life line cable runs through the corner anchor point re-directing it by up to 90 degrees.

HORIZONTAL LIFELINE – CLASSIC RETROLINK

- Specifically for use with permanent horizontal height safety lifeline systems.
- Constructed of 316 stainless steel, suits roof pitches up to 25 degrees.
- Intended for use with 8mm stainless steel cables.
- Complies with AS/NZS 1891.2.
- Equipped with an engineered energy absorbing region to minimise loads on users and structures in the event of a fall.

METAL ROOF / STEEL PURLIN METAL ROOF / STEEL PURLIN METAL ROOF / STEEL PURLIN METAL ROOF / STEEL PURLIN



CLASSIC RETROLINK INTERMEDIATE T BOLT

Product Code: STAT.RETRO004

- Energy absorbing horizontal lifeline INTERMEDIATE anchor point.

What am I used for?

A height safety system anchor point designed to be mounted into various metal profile roof sheeting with steel purlin construction as part of a permanent horizontal lifeline system, to limit lifeline span distances to under ten (10) metres.



CLASSIC RETROLINK SINGLE END ASSEMBLY

Product Code: STAT.RETRO005

- Energy absorbing horizontal lifeline END anchor point.

What am I used for?

A height safety system anchor point designed to be mounted into various metal profile roof sheeting with steel purlin construction as part of a permanent horizontal lifeline system, as end anchor attachment points for the cable to start and terminate at.



CLASSIC RETROLINK SINGLE CORNER ASSEMBLY







Product Code: STAT.RETRO006

- Energy absorbing horizontal lifeline CORNER anchor point.

What am I used for?

A height safety system anchor point designed to be mounted into various metal profile roof sheeting with steel purlin construction as part of a permanent horizontal lifeline system. The life line cable runs through the corner anchor point re-directing it by up to 90 degrees.

HORIZONTAL LIFELINE – CLASSIC RAFTERLINK

-  Specifically for use with permanent horizontal height safety lifeline systems on tile/timber with easy access, mounted to side of the rafter.
-  Suits roof pitches up to 25 degrees.
-  Constructed entirely of stainless steel.
-  Equipped with an engineered energy absorbing region to minimise loads on users and structures in the event of a fall.
-  Intended for use with 8mm stainless steel cables.
-  Complies with AS/NZS 1891.2.

RAFTERLINK SIDE MOUNTED INTERMEDIATE T BOLT

Product Code: STAT.RAFSM001

- Energy absorbing horizontal lifeline INTERMEDIATE anchor point.

What am I used for?

A height safety system anchor point designed for use on tile/timber with easy access, mounted to the side of rafters as part of a permanent horizontal lifeline system, to limit lifeline span distances to under ten (10) metres.

TILE / TIMBER



RAFTERLINK SIDE MOUNTED END ASSEMBLY (2)

Product Code: STAT.RAFSM002

- For use on Horizontal Lifeline Systems on tile/timber with easy access, mounted to side of the rafter.
- Energy absorbing horizontal lifeline END anchor point.







What am I used for?

A height safety system anchor point designed for use on tile/timber with easy access, mounted to the side of rafters as part of a permanent horizontal lifeline system, as end anchor attachment points for the cable to start and terminate at.

TILE / TIMBER



HORIZONTAL LIFELINE – CLASSIC SINGLE ANCHOR

- 
 Designed to be mounted into steel purlin construction, includes nut and washer to bolt directly to a steel beam/section.
- 
 Specifically for use with permanent horizontal height safety lifeline systems.
- 
 Suits roof pitches up to 25 degrees.
- 
 Constructed entirely of 316 stainless steel.
- 
 Intended for use with 8mm stainless steel cables.
- 
 Complies with AS/NZS 1891.2.

CLASSIC SINGLE INTERMEDIATE T-BOLT

Product Code: STAT.ONEND001

- Energy absorbing horizontal lifeline INTERMEDIATE anchor point.

What am I used for?

A height safety system anchor point designed for use as an intermediate on permanent horizontal lifeline system, to limit lifeline span distances to under ten (10) metres.

STEEL



CLASSIC SINGLE END ASSEMBLY

Product Code: STAT.ONEND006

- Energy absorbing horizontal lifeline END anchor point.

What am I used for?

A height safety system anchor point designed for use on permanent horizontal lifeline system as end anchor attachment points for the cable to start and terminate at.

STEEL



CLASSIC SINGLE CORNER ASSEMBLY

Product Code: STAT.ONEND007

- Energy absorbing horizontal lifeline CORNER anchor point.





What am I used for?

A height safety system anchor point designed for use on permanent horizontal lifeline system as a corner anchor point. The life line cable runs through the corner anchor point re-directing it by up to 90 degrees.

STEEL



HORIZONTAL LIFELINE – CLASSIC WALL/CEILING MOUNT

-  Horizontal Lifeline System, designed to be mounted overhead or on a vertical face of wall.
-  Stainless Steel construction.
-  Intended for use with 8mm stainless steel cables.
-  Complies with AS/NZS 1891.2.



WALL MOUNTED INTERMEDIATE T BOLT

Product Code: STAT.WALLMTOO1

- Energy absorbing horizontal lifeline INTERMEDIATE anchor point.

What am I used for?

A height safety system anchor point designed to be mounted overhead or on vertical face of wall or steel structure as part of a permanent horizontal lifeline system to limit lifeline span distances to under ten (10) metres.

WALL MOUNTED END UNIT

Product Code: STAT.WALLMTOO2

- Energy absorbing horizontal lifeline END anchor point.

What am I used for?

A height safety system anchor point designed to be mounted overhead or on vertical face of wall or steel structure as part of a permanent horizontal lifeline system as attachment points for the cable to start and terminate at.

WALL MOUNTED INTERMEDIATE FOR CONCRETE

Product Code: STAT.WALLMTOO4

- Energy absorbing horizontal lifeline INTERMEDIATE anchor point.

What am I used for? A height safety system anchor point designed to be mounted overhead or on a vertical face into a concrete structure as part of a permanent horizontal lifeline system to limit lifeline span distances to under ten (10) metres.



WALL MOUNTED END UNIT FOR CONCRETE

Product Code: STAT.WALLMTOO5

- Energy absorbing horizontal lifeline END anchor point.

What am I used for? A height safety system anchor point designed to be mounted overhead or on a vertical face into a concrete structure as part of a permanent horizontal lifeline system as attachment points for the cable to start and terminate at.

STEEL \ WALL



STEEL \ WALL



CONCRETE \ WALL



CONCRETE \ WALL



STANDARD TERMS AND CONDITIONS OF SALE

The following terms and conditions of sale ("Terms of Sale") shall apply to and form part of any contract for the supply of goods and services ("Goods") by SAFETYLINK PTY LTD ("the Company") to another party ("the Purchaser").

1. QUOTATION

- 1.1 No quotation given by the Company to the Purchaser shall constitute an offer. Any order from the Purchaser to the Company for the supply of Goods shall not be binding upon the company until accepted by the Company.
- 1.2 Prices given in any quotation by the Company are applicable to that quotation only and will not apply in any other instance.
- 1.3 Quotations are valid for a period of thirty (30) days from date of issue by the Company or otherwise specified in the quotations.

2. PURCHASE ORDERS

- 2.1 When ordering, an official order is to be submitted by the Purchaser to the Company quoting an order number, full description of the Goods to be purchased and the delivery time and address. Reference to the Company's quotation number to the Purchaser should also be made (where applicable).
- 2.2 These Terms of Sale apply to the Purchaser and to the Company in respect of Goods ordered by the Purchaser and any terms and conditions set out in the Purchaser's order deviating from or inconsistent with these Terms of Sale will not bind the Company notwithstanding any statement by the Purchaser in its order that its terms and conditions shall prevail over these Terms of Sale.
- 2.3 A contract shall only be or be deemed to have been entered into between the Company and the Purchaser for the supply of the Goods when the Purchaser's order has been accepted by the Company in writing.

3. PAYMENT

- 3.1 The Purchaser must pay the Company for the Goods in full, by cash, credit card payment or direct debit into the Company's nominated bank account, at the time an order is placed, unless credit is extended to the Purchaser by the Company.
- 3.2 The extension of credit to the Purchaser by the Company shall be at the sole discretion of the Company and, where extended, unless otherwise advised in writing by the Company, the Company requires payment by cash, credit card payment or direct debit into the Company's nominated bank account 24 hours prior to delivery of the Goods to the Purchaser.
- 3.3 Without in any way limiting the Company's right to require payment in full on the due date, the Company may at its sole discretion, charge interest on overdue accounts at the rate of 2.5% above the National Australia Bank's variable Benchmark lending rate as from time to time applicable.
- 3.4 The Purchaser agrees that the Company shall be entitled to use the services of a credit agency from time to time to obtain information concerning the Purchaser (and where the Purchaser is a company, its Directors) in order to assess the Purchaser's credit worthiness.
- 3.5 Time specified for payment is of the essence. This clause 3 is an essential term of these Terms of Sale.

4. INDEMNITY

Without prejudice to any other rights the Company may have against the Purchaser, and to the extent permitted by law, the Purchaser shall indemnify the Company for, and save it harmless from any loss, damage or expense (including, without limitation, costs, whether or not the subject of a court order) incurred by it should be Purchaser breach any of these Terms of Sale or cancel any order or part thereof for the Goods after acceptance by the Company.

5. DELIVERY

- 5.1 Unless agreed in writing the Company shall arrange for delivery of the goods ("Delivery") to the Purchaser's nominated delivery point.
- 5.2 The Company is entitled to charge a fee for Delivery.
- 5.3 The Company is deemed to have delivered the Goods when they are made available for unloading at the Purchaser's nominated delivery point.
- 5.4 The Purchaser is responsible for unloading the Goods from the Company's delivery vehicle.
- 5.5 If the Goods are to be collected by the Purchaser from the Company's store Delivery occurs when the Goods are loaded on the Purchaser's vehicle.
- 5.6 The Company is not liable for any claims for non-fulfillment or late Delivery of Goods or for any loss or damage (including consequential loss or damage) suffered by the Purchaser arising from delay in Delivery or failure to deliver due to circumstances beyond the Company's reasonable control and the Purchaser shall accept and pay for the Goods notwithstanding late Delivery.
- 5.7 The Purchaser shall in its purchase order advise the Company of the nominated delivery point and required delivery time.
- 5.8 Unless otherwise agreed by the Purchaser and the Company, the Company shall be entitled to deliver the Good in one or more lots. Where Delivery of the Goods is affected by way of part Delivery the Company shall be entitled to invoice the Purchaser for pro-rata progress payments in respect thereof.
- 5.9 Notwithstanding the Purchaser's inability to accept Delivery of the Goods, the Company shall be deemed to have delivered the Goods in accordance with these Terms of Sale and the Goods shall be at the Purchaser's risk from the time when the Goods have been loaded onto the Purchaser's collecting vehicle or delivered to the Purchaser's nominated delivery point (as the case requires).

6. ADDITIONAL CHARGES

The Company reserves the right to charge the Purchaser for any costs charges or expenses whatsoever that the Company may incur as a result of.

- A vehicle or wagon detention of the Goods (to the extent the same is not caused or contributed to by the Company).
- B demurrage on ships as a consequence of any act or omission of the Purchaser.
- C any special requirements or stipulations of the Purchaser accepted by the Company but not provided for in the Terms of Sale.
- D any increase in duties, taxes, freight, insurance or other charges or expenses from the date of acceptance of the Purchaser's order by the Company to the date of Delivery.

7. STORAGE

If the Company notifies the Purchaser that the Goods are ready for Delivery and the Purchaser requests the Company to hold the Goods on its behalf, such Goods will be held by the Company at the Purchaser's risk, and the Company shall be entitled to charge storage fees in respect of the Goods so stored.

8. CLAIMS

- 8.1 The Purchaser shall inspect the Goods immediately upon Delivery and, if the Goods are damaged or not otherwise in conformity with the contract relating to their supply, shall give written notice to the Company of the details in respect thereof within seven days of the date of Delivery.
- 8.2 Any Goods the subject of a notice under clause 8.1 shall be left in the state and condition in which they were delivered until such time as the Company or its duty authorized agent has inspected the Goods, such inspection to be carried out within a reasonable time after notification by the Purchaser. If the Goods are not so left in the state and condition in which they were delivered, the Purchaser shall be deemed to have accepted the Goods and shall pay the purchase price for the Goods to the Company.
- 8.3 Acceptance of the Goods shall be deemed for all purposes to have taken place when Delivery has occurred.

8A. RETURN OF GOODS

- 8A.1 No Goods may be returned by the Purchaser to the Company without prior written authorisation from the Company. This authorisation will only be given where the Goods are incorrectly delivered by the Company to the Purchaser or where the Goods are incomplete or defective (other than as a consequence of the acts of the Purchaser or its agents).
- 8A.2 In order to obtain authorisation under clause 8A.1, the Purchaser must contact the Company. The Goods returned must be accompanied by all appropriate documentation, all applicable packaging and all contents of the Goods as originally supplied by the Company to the Purchaser.
- 8A.3 The Purchaser must dispatch all incorrectly delivered, incomplete or defective Goods for return to the Company;
- (a) in the case of incorrectly delivered Goods, within 10 days of delivery of the Product to the Purchaser; or
 - (b) in the case of defective Goods, within 10 days of the Purchaser becoming aware of the defect.
- 8A.4 Subject to the Purchaser strictly complying with the provisions of this clause, the Company will:
- (a) provide a full refund to the Purchaser for incorrectly delivered Goods; and
 - (b) provide the Purchaser with a credit in respect of defective Product.
 - (c) arrange for the collection and uplifting of defective goods
- 8A.5 All Goods returned by the Purchaser must be received by the Company at the address noted in this Agreement unless otherwise notified to the Purchaser by the Company.
- 8A.6 No Goods will be accepted for return by the Company unless agreed in writing by the Company prior to such return and then only upon conditions acceptable to the Company and at the Purchaser's entire risk as to loss or damage. Where the Company agrees to accept Goods for return, the Company's then current restocking charge, as varied from time to time, will be charged to the Purchaser and shall be immediately payable.
- 8A.7 Notwithstanding sub-clauses 8A.1 to 8A.6, the Company may, at its sole discretion, elect in writing to accept returned Goods. The Goods returned must be:
- (a) accompanied by all appropriate documentation, all applicable packaging and all contents of the Goods as originally supplied by the Company to the Purchaser;
 - (b) returned by pre-paid freight within thirty (30) days of Delivery; and
 - (c) in the original, resalable condition.

The Company reserves the right to charge the Customer 10% of the value of the Product for the Company's re-stocking fee. This restocking fee is a genuine pre-estimate of the Company's loss and expenses from accepting the returned Goods.

9. PASSING OF RISK AND RETENTION OF TITLE

- 9.1 Whilst the risk in the Goods passes on Delivery, legal and equitable title remains with the Company until payment in full for all debts accrued or owed to the Company is made.
- 9.2 The Purchaser may sell or deal in the ordinary course of business with Goods and with the interest of the Company in the Goods and may for the purpose of such sale or dealing part with possession thereof but the proceeds of any sale or dealing with be held by the Purchaser on trust for the company. The Purchaser hereby agrees to accept this appointment as bailee and fiduciary.
- 9.3 Notwithstanding the above, the Company reserves the following rights in relation to the Goods until all amounts owed by the Purchaser to the Company are fully paid
- A legal and equitable ownership of the goods.
 - B to enter the Purchaser's premises (or the premises of any associated company or agent where the Goods are located) without liability for trespass or any resulting damage and retake possession of the Goods, and
 - C to keep or resell any of the Goods repossessed pursuant to (b) above.
- 9.4 In the event that the Goods are resold, or goods manufactured using the Goods are sold, by the Purchaser, the Purchaser holds on trust such part of the proceeds of any such sale as represents the invoice price of the Goods sold or used in the manufacture of the Goods sold in a separate identifiable account as the beneficial property of the company and must pay such amount to the company upon request. Notwithstanding the provisions above the Company is entitled to maintain an action against the Purchaser for the purchase price of the Goods.
- 9.5 Where the Purchaser processes the Goods or incorporates them in or with any other product before property has passed to the purchaser, the new product shall be separately stored or marked in a manner which makes such new product readily identifiable as the Goods of the Company.
- 9.6 If payment for the Goods is not made by the Purchaser by the due date specified by the Company to the Purchaser then the Purchaser shall return the goods to the company on demand. If the Purchaser does not return the goods to the Company within 48 hours of receipt of the demand, the Company shall be entitled to enter upon the Purchaser's premises at any time to do all things necessary to recover the Goods. The Purchaser shall be liable for all costs associated with the exercise by the Company of its rights under this clause, which shall be repayable on demand.

10. DEFAULT

Should the Purchaser fail to make due payment for any Goods supplied by the Company or commit a breach of any term of the sale, or being a natural person commit an act of bankruptcy, or being a corporation by act or omission enables the appointment of an administrator, scheme manager, trustee, official manager, receiver, receiver and manager, liquidator or any other person authorized to enter into possession or assume control of any property of the Purchaser pursuant to a mortgage or other security, the Company may, without prejudice to any other rights it may have, do any or all of the following.

- A Withdraw any credit facilities which may have been extended to the Purchaser and require immediate payment of all moneys owing or accrued.
- B Withhold any further deliveries of Goods or performance of services required under the accepted purchase order.
- C In respect of Goods already delivered, enter into the Purchaser's premises to recover and resell same for its own benefit.
- D Suspend and/or terminate performance of any other contracts which the Company has with the Purchaser.

11. WARRANTIES

11.1 To the extent permitted by law all implied conditions, guarantees, warranties and undertakings are expressly excluded.

11.2 Except as provided in this clause the Company shall not be liable for any loss or damage, whether direct or indirect (including consequential losses or damage) arising out of any breach of contract by the Company or any negligence of the Company, its employees or agents.

11.3 Should the Company be liable for a breach of a consumer guarantee, condition or warranty implied by the Australian Consumer Law (not being a guarantee, condition or warranty implied by Sections 51, 52 and 53 of that Law) then its liability for a breach of any such guarantee, condition or warranty express or implied shall be limited, at its option, to any one or more of the following.

- A in case of Goods
 - (i) the replacement of the Goods or the supply of equivalent Goods.
 - (ii) the repair of the goods,
 - (iii) the payment of the cost of replacing the Goods or acquiring equivalent Goods.
 - (iv) The payment of the cost of having the Goods repaired.Provided that any such Goods are returned to the Company by the Purchaser at the Purchaser's expense.
- B in the case of services
 - (i) the supply of the services again,
 - (ii) the payment of the cost of having the services supplied again.

11.4 The Company will not liable for the costs of recovery of the Goods from the field, loss of use of the Goods, loss of time, inconvenience, incidental or consequential loss or damage, nor for any other loss or damage of her than as stated above, whether ordinary or exemplary, caused either directly or indirectly by use of the Goods.

11.5 The Company warrants that at the time of shipment, Goods manufactured by it will be free from defects in material and workmanship. In the absence of a modified written warranty, the Company agrees to making good any such defects by repairing the same or at the Company's option by replacement, for a period of (1) one year from the date of shipment. This limited warranty applies provided that:

- (a) defects have arising solely from faulty materials or workmanship;
- (b) the Goods have not received maltreatment, inattention or interference;
- (c) the Goods have been installed in accordance with the Company's Installation Handbooks using only products supplied by the Company;
- (d) accessories used with the Goods are manufactured by or approved by the Company ;
- (e) the Goods are maintained in accordance with Australian Standard 1891.4 (section 9)
- (f) you notify any claim under this warranty to SafetyLink in writing to the address below no later than 14 days after the event or occurrence concerning the produce giving rise to the claim and you pay all costs related to your claim.

This warranty does not apply to any defects or other malfunctions caused to the Goods by accident, neglect, vandalism, misuse, alteration, modification or unusual physical, environment or electrical stress.

Please note that the benefits to the purchaser (as a consumer) given by this warranty are in addition to your other rights and remedies under the Australian Consumer Law. Our goods come with guarantees that cannot be excluded under the Australian Consumer Law. You are entitled to a replacement or refund for a major failure and compensation for any other reasonably foreseeable loss or damage. You are also entitled to have the goods repaired or replaced if the goods fail to be of acceptable quality and the failure does not amount to a major failure.

11.6 If any goods are not manufactured by the Company, the guarantee of the manufacturer thereof shall be accepted by the Purchaser as the only express warranty given in respect of the goods.

11.7 Except as provided in this clause 11, all express and implied warranties, guarantees and conditions under statute or general law as the merchantability, description, quality, suitability or fitness of the Goods for any purpose or as to design, assembly, installation, materials or workmanship or otherwise are hereby expressly excluded (to the extent to which they may be excluded by law).

12. FITNESS FOR PURPOSE

The Purchaser agrees that it does not rely on the skill or judgment of the Company in relation to the suitability of any of the goods for a particular purpose unless it has indicated that purpose in writing to the company and the Company has acknowledged in writing that the Goods will be fit for the particular purpose.

13. OWNERSHIP AND CONFIDENTIALITY

- 13.1 The Purchaser acknowledges that all proprietary information in respect of the Goods and all right title and interest therein are the sole property of the Company and the Purchaser shall gain no right title or interest in the Proprietary Information whatsoever. The Purchaser specifically acknowledges the Company's exclusive rights to ownership of any modification, translation or adaptation of the Proprietary information and any other improvement or development based thereon which is developed, supplied, installed or paid for by or on behalf of the purchaser or any customer of the Purchaser.
- 13.2 The Purchaser acknowledges that the Proprietary, Information is confidential and contains trade secrets and that its disclosure will cause the company to suffer financial loss.
- 13.3 The Purchaser shall implement all measures necessary to safeguard the Company's ownership and confidentiality of the proprietary information including without limitation.
- (i) Allowing its employees, agents, and customers access to the Proprietary Information only to the extent necessary to ensure performance of the Goods and to require, as a condition to such access that such persons comply with the provisions of this part of these Terms of Sale.
 - (ii) To co-operate with company in the enforcement of such compliance by the Purchasers employees, agents and customers,
 - (iii) Not to remove any nor permit the removal of any or alteration of any copyright or confidentiality labels placed on the goods by the Company.
 - (iv) Not to disassemble, decompile or reverse engineer any part of the Goods whether software or hardware.
 - (v) Not to or reproduce any part of the Goods whether software or hardware.

The Purchaser indemnifies, and agrees to keep indemnified the Company against any loss, cost, expenses, damages, and harm suffered or incurred by the Company in connection with or arising out of or as a result of the breach by the Purchaser of any of the provisions of this clause.

14. DEFINITION

For the purposes of this clause "Proprietary Information" means any and all information relating to the goods or the installation thereof including designs, drawing, instruction booklets, specifications, circuit drawings, componentry, trade marks and patents an any and all proprietary information, intellectual property and copyright in such proprietary information.

15. SALES AND GOODS AND SERVICES TAX

Should any sales tax, Goods and Services Tax as levied under the A New Tax System (Goods & Services Tax) Act 1999 (as amended) and any other tax, fee, levy or duty imposed by any competent authority be payable on any of the Goods supplied by the Company, such tax, fee, levy or duty will be to the Purchaser's account and shall be calculated using the rates and methods of assessment in force at the time of Delivery. The Purchaser is liable of any other applicable tax, including, without limitation withholding tax.

16. DISPUTES

- 16.1 Any disputes between the parties arising from the performance of the provisions of these Terms of Sale must be settled through Friendly consultation by the Parties. All disputes arising in respect of these Terms of Sale which are not resolved within thirty (30) days of first arising will be finally settled under the Rules of Conciliation and Arbitration of the International Chamber of Commerce by a single arbitrator appointed in accordance with the said Rules. The place of arbitration will be the State from which the goods are sold by the Company ('the State'). The procedural law applicable to the arbitration will be that of the State. The decision of the arbitration is final and binding upon both parties.
- 16.2 During the period in which the dispute is being resolved, the parties must continue to perform all of the provisions of these Terms of Sale which are not under dispute and which are able to be performed by the parties.

17. FORCE MAJEURE

The Company shall not be liable for any claims of non-fulfillment or late Delivery should actual Delivery of the Goods or any parts be delayed in consequence of unforeseen events such as strikes, unforeseen breakdown of machinery (save where caused by improper maintenance or operation by untrained personnel), suspension of electricity or other relevant power supply, riots, war, robber, civil commotion, adverse non foreseeable weather conditions, disaster caused by fire and/or water, action of government or port authority, delay of vessel, rail-road embargoes, inability to obtain transportation facilities or due to a failure of an original equipment manufacturer to supply components by the due date.

18. ENTIRE AGREEMENT

These Terms of Sale contain the entire agreement between the parties hereto on the subject matter of this agreement. Any variation or modification of these Terms of Sale must be in writing.

- 18.1 The company reserves the right to review and amend its terms of sale from time to time. Written notification forwarded to the Purchaser by ordinary mail shall be deemed sufficient notification to bind the Purchaser to any revised or amended terms of sale for all orders place by the Purchaser and accepted by the Company after receipt of such notification.

19. SEVERANCE

If any provision of the Contract is deemed to be unlawful or unenforceable, such provision shall be severed from the Contract and all other provisions shall remain in force.

20. NON WAIVER

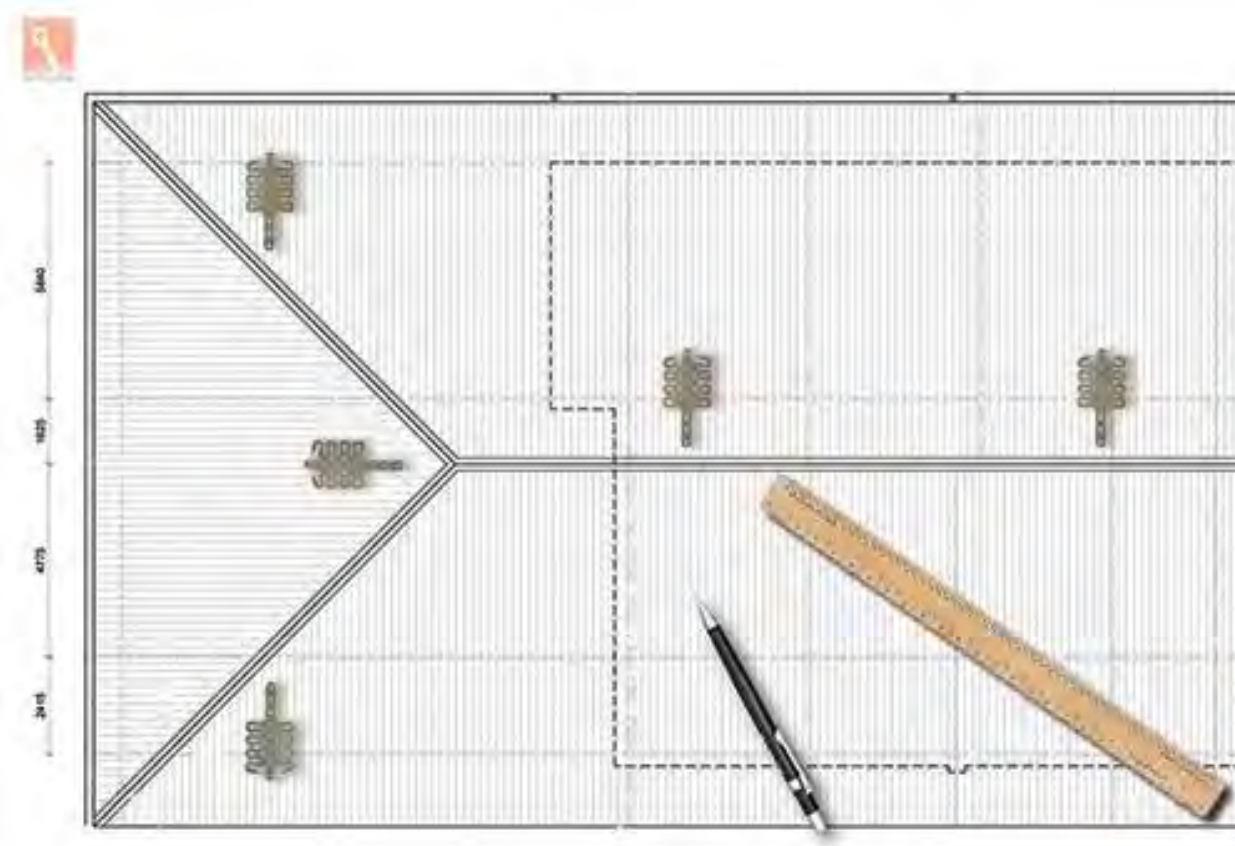
The failure of any party to enforce the provisions of this Contract or to exercise provisions or rights and shall not affect the enforcement of this Contract or preclude or prejudice such party from exercising the same or any other rights it may have.

21. JURISDICTION

The parties agree that this Contract shall be governed by the Laws of New South Wales and submit to the exclusive jurisdiction of the Courts of New South Wales.

NOTHING IN THESE CONDITIONS SHALL BE READ OR APPLIED SO AS TO EXCLUDE, RESTRICT OR MODIFY OR HAVE THE EFFECT OF EXCLUDING, RESTRICTING OR MODIFYING ANY CONDITION, WARRANTY, GUARANTEE, RIGHT OR REMEDY IMPLIED BY LAW (INCLUDING THE AUSTRALIAN CONSUMER LAW (CTH) AND WHICH BY LAW CANNOT BE EXCLUDED, RESTRICTED OR MODIFIED.

EXPERT FALL PROTECTION PLANNING



SafetyLink's design and planning team are here to help work out the positioning of your fall protection system, ensuring all areas of your roof are accessed safely.

Things to consider when planning your roof layout:

- 🔍 Are all areas of your roof protected, allowing complete access when working at heights?
- 🔍 Are you protected from the ground up, allowing complete access to your roof?
- 🔍 Detailed comprehensive documentation provided e.g. installation guides, testing results, product sheets should be provided.
- 🔍 SafetyLink can also provide you with a qualified and reputable installer of SafetyLink products.

Contact our design team at info@safetylink.com and we can plan your fall arrest system for you.

SafetyLink Anchor Product Range

SURFACE MOUNTED ANCHORS



 SafetyLink FrogLink




 SafetyLink Classic Surfacemounted Aluminium



 SafetyLink SurfaceLink

CONCRETE ANCHORS



 SafetyLink ConcreteLink



 SafetyLink ConcreteLink Collared Eyebolt



 SafetyLink WindowLink

TIMBER ANCHORS



 SafetyLink TileLink



 SafetyLink Side Mounted RafterLink



 SafetyLink RafterLink

STEEL / PURLIN ANCHORS



 SafetyLink RetroLink Tube

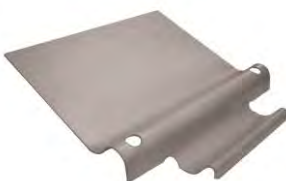


 SafetyLink RetroLink Tube



 SafetyLink SwiveLink with Nut

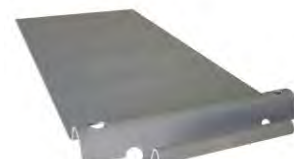
LADDER BRACKETS



 SafetyLink Fixed LadderLink



 SafetyLink Fixed LadderLink - Wall Mounted

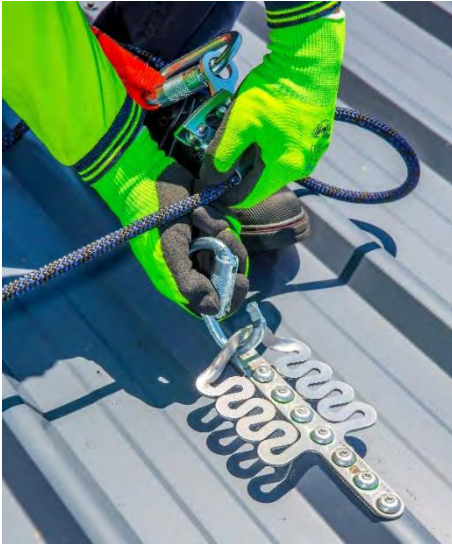


 SafetyLink Fixed LadderLink - Extended



LEADERS IN FALL PROTECTION

ROOF ANCHORS



ENERGY ABSORBING
FAST SIMPLE UNITS TO INSTALL
PATENTED DESIGN

HORIZONTAL LIFELINES



ENERGY ABSORBING
LOW PROFILE PATENTED DESIGN
FALL INDICATORS

LADDER STABILISERS



PREVENTS SIDWAYS MOVEMENT
STABILISERS LADDER
EASY TO INSTALL, UNOBTRUSIVE

PERMANENT LADDERS



ERGONOMICALLY DESIGNED RUNGS
HEAVY GAUGE ALUMINIUM
SWAGED RUNGS FOR EXTRA STRENGTH

Heightech Safety Systems

Phone: 1800 723 343

orders@heightechsafety.com | www.heightechsafety.com.au