

Safety as basic as the ABCs!

A typical Personal Fall Arrest System (PFAS) incorporates three components, often described as the ABC's of fall protection. The anchorage/anchorage connector, body support and connecting device—when used together—form a complete system for maximum worker protection. But don't forget the other important components of a comprehensive fall protection program: descent and rescue, education and fall protection for tools.

Body support harnesses help distribute fall forces over the upper thighs, pelvis, chest and shoulders. They provide a connection point on the worker for the personal fall arrest system.

Anchorage provide a secure point of attachment. Anchorage connectors vary by industry, job, type of installation and structure. They must be able to support the intended loads and provide a sufficient factor of safety for fall arrest.

Connectors such as shock-absorbing lanyards or self-retracting lifelines connect a worker's harness to the anchorage.

Rescue and Descent devices are used to raise or lower a worker to safety or retrieve them from a confined space.

Education is essential. We offer a variety of training and consultative services to fit your needs.

Fall protection for tools helps make work environments safer and more productive by reducing dropped object incidents.



The sky's the limit.

“Dedicated To Bringing Every Worker At Height Home Safely”

3M Fall Protection, a part of 3M's Personal Safety Division is dedicated to fall protection and rescue. Our focus is razor sharp, it continually drives us to design and manufacture the safest possible height safety gear. We understand the industries we serve and listen to the workers in the field. We employ the best engineers to create innovative solutions and patent the products that keep workers safe at heights around the world. 3M Fall Protection has the best quality and largest range of fall protection products in the industry. But we're more than a product company. We take an innovative approach in bringing our products to the field.

We have created international partnerships and a vast network of authorised distributors, certified installers and service centres. We offer on-site and in-house training. Our manufacturing sites hold ISO 9001 quality accreditation, as well as ISO 14001 environment and AS4801 Health & Safety accreditation. 3M Fall Protection is one of the world's leading manufacturers of fall protection and rescue equipment, with decades of experience and a legacy of innovation. Look for complete solutions in our extensive range of DBI-SALA® and Protecta® brands.

Delivery

To assist you on receiving your products in a timely manner, please note delivery time for products are indicated below:

- Products available for next day dispatch*.
- Products made to order*.

* Core range subject to stock availability. 2 week lead time only applies to locally manufactured items. Products made overseas may take up to 6 weeks to deliver.

Anchorage

Anchors / Specialised Anchors
Horizontal Systems / Anchor Straps / Lifelines / Anchorage Devices

Pages 5-8

Pages 6
Pages 7-8

Body Harnesses

ExoFit STRATA™ Harnesses
ExoFit NEX™ Harnesses
Delta™ Harnesses
Fall Protection Kits / DBI-SALA® Miners Belts
Pro Harnesses / Protecta® Harness / Protecta® Kits / Miners Belts

Pages 9-24

Pages 10-11
Pages 12-14
Pages 15-17
Pages 18
Pages 19-24

Connectors

Karabiners / Scaffold Hooks /
Rope Grabs & Lifelines / Vertical Systems / Pole Straps
Force2™ Shock Absorbing Lanyards /
EZ-Stop™ Shock Absorbing Lanyards
Nano-Lok™ SRL / Nano-Lok™ Extended Length SRL /
Nano-Lok™ Hot Works SRL / Nano-Lok™ LE SRL / Ultra-Lok™ SRL /
Sealed Blok SRL / Load Arrestors / SRL Accessories / Karabiners /
Hooks / Rope Grabs & Lifelines
Rebel™ SRL / Shock Absorbing Lanyards

Pages 25-36

Pages 26-27
Pages 28-30
Pages 31-34
Pages 35-36

Descent & Rescue

5-Piece Hoist System / Tripods / Emergency Retrieval Sealed Blok SRL /
Winches / Retrieval SRL Hitch Mount / Bosuns Chairs / Spreader Bar /
Portable Fall Arrest Post / Side Entry System /
Bases and Mounting Options
Rollgliss™ Rescue / Control Device / Rescue Descender System
PenoGuard™ / Protecta® Confined Space Equipment
ExoFit NEX™ Suspension Harness with Chest Ascender
Connectors / Ropes / Bags / Spine Splint / Stretcher

Pages 37-45

Pages 38-40
Pages 41
Pages 42
Pages 43
Pages 44-45

Speciality Systems

FlexiGuard™ Solutions
DBI-SALA® Engineered Systems

Pages 46-48

Pages 46-47
Pages 48

Accessories

Fall protection for Tools

Delivery Index

Services

Pages 49

Pages 50-54

Pages 55-61

Pages 62-63



Anchorage

3M offers the most complete selection of temporary and permanent anchorage connectors available. Our safety anchors include steel anchors, concrete anchors, roof anchors and specialty anchors like our vacuum mount for smooth surface environments. We manufacture anchor systems to fit your unique applications.

3M™ DBI-SALA® Structural Mount Anchors



2100101 2101630 9501683

3M Order Code	Model #	Description
70007440434	2100101	Saflok™ Toggle Anchor
70007440707	2101630	D-ring with anchorage plate
70007610515	9501683	D-ring Anchor

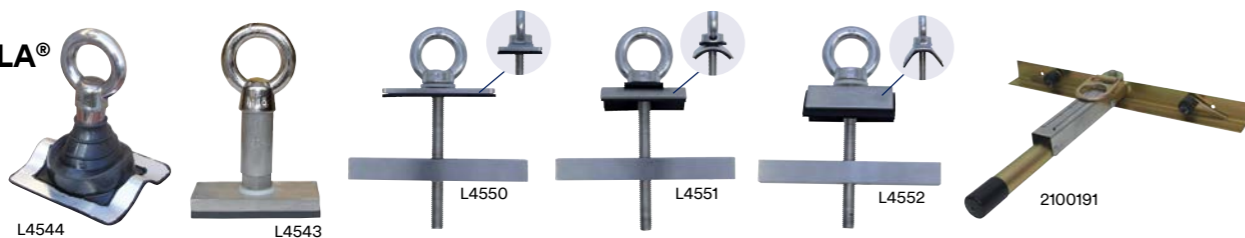
3M™ DBI-SALA® Concrete Mount Anchors



2100085 2101004 2104560

3M Order Code	Model #	Description
70007450920	2100085	Saflok™ Concrete wedge anchor
70007440699	2101004	Concrete detent anchor
70007441093	2104560	Bolt on, with swivel D-ring

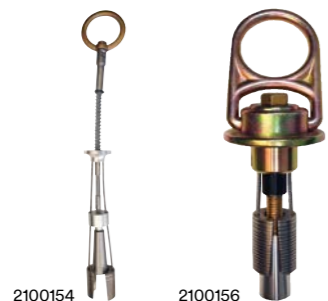
3M™ DBI-SALA® Roof Mount Anchors



L4544 L4543 L4550 L4551 L4552 2100191

3M Order Code	Model #	Description
70007928024	L4543	Purlin mounted for steel roofs
70007925426	L4544	Truss mounted for steel or tiled roofs
70007938395	L4550	Purlin mounted, for flat pan applications
70007937967	L4551	Purlin mounted, for corrugated iron applications
70007932786	L4552	Purlin mounted, for spandek applications
70007951026	2100191	Anchor on the Go™, for sheet metal roofs

3M™ DBI-SALA® Mining Anchors



2100154 2100156

3M Order Code	Model #	Description
70007451050	2100154	Saflok™ Mining Bolt Anchor with swivelling O-ring
70007451076	2100156	Saflok™ Hybrid Bolt Mining Swivel Anchor

3M™ DBI-SALA® Door Jamb Anchor



3M Order Code	Model #	Description
70007442091	2100080	Door/Window Jamb Anchor

3M™ DBI-SALA® Beam Anchors



2103143 2104700 2108406

3M Order Code	Model #	Description
70007440806	2103143	Beam trolley, adjustable
70007452413	2104700	Glyder™ 2 sliding beam anchor, adjustable
70007442091	2108406	Fixed beam anchor, adjustable

3M™ DBI-SALA® First-Man-Up™ Systems



3M Order Code	Model #	Description
70007441051	2104530	1.8 - 3.6 m working length
70007441069	2104531	2.4 - 4.8 m working length

3M™ DBI-SALA® Sayflin™ Temporary Lifeline Rope Systems



Up to 2 users

3M Order Code	Model #	Description
70007490355	7600505	15 m
70007490371	7300507	20 m
70007490389	7600508	25 m
70007490405	7600510	30 m

3M™ DBI-SALA® EZ-Line™ Retractable Horizontal Lifeline Wire Cable System



Up to 6 users (2 per span)
Note: DBI-SALA® Engineered permanent horizontal lifeline systems and Sayflin™ post and base system also available.

3M Order Code	Model #	Description
70007488128	7605061	18 m

3M™ DBI-SALA® Round Strap Anchor Strap



3M Order Code	Model #	Description
AT010622010	1003581	Tie-Off-Adaptor 25mm 0.6m
AT010622028	1003582	Tie-Off-Adaptor 25mm 1.0m
AT010622036	1003583	Tie-Off-Adaptor 25mm 1.2m
AT010622044	1003584	Tie-Off-Adaptor 25mm 1.5m
AT010622051	1003585	Tie-Off-Adaptor 25mm 2.0m

3M™ DBI-SALA® Vacuum Anchor System



3M Order Code	Model #	Description
70007452876	2200095	Mobi-Lok™ self-contained vacuum anchor Also available: Industrial and aviation compliant versions, Shop-air model

3M™ DBI-SALA® SecuraSpan™ Temporary Horizontal Lifeline Wire Cable Systems



Up to 6 users (2 per span)

3M Order Code	Model #	Description
70007959672	7400120	6 m
70008287875	7400130	9 m
70007936290	7400140	12 m
70008287883	7400150	15 m
70007962155	7400160	18 m

3M™ DBI-SALA® Tie-Off Anchor Strap Adaptor with Interlocking Rings



3M Order Code	Model #	Description
70007928834	E849-005	0.5 m
70007929196	E849-008	0.8 m
70007925731	E849-010	1 m
70007928909	E849-012	1.2 m
70007925566	E849-015	1.5 m
70007925574	E849-020	2 m

3M™ DBI-SALA® Flat Strap Anchor Strap



3M Order Code	Model #	Description
AT010622010	1003581	Tie-Off-Adaptor 25mm 0.6m
AT010622127	1003592	Tie-Off-Adaptor 25mm 1.2m Loop Ends

3M™ Protecta® PRO-Line™ Temporary Horizontal Lifeline System



3M Order Code	Model #	Description
70007427167	1200101	18 m, webbing, up to 2 users

3M™ Protecta® Dual Ring Tie-Off Adaptor Anchor Strap



3M Order Code	Model #	Description
70007442240	2190100	0.9 m
70007442257	2190101	1.2 m
70007442265	2190102	1.8 m

3M™ Protecta® Tie-Off Adaptor with Interlocking Rings Anchor Strap



3M Order Code	Model #	Description
70007938429	AM500/150AU	1.5 m

3M™ Protecta® Round Webbing Anchor Strap



3M Order Code	Model #	Description
70007928198	AM450/120AU	1.2 m
70007938403	AM450/150AU	1.5 m
AT010621657	Tie-Off Adaptor	2m

3M™ Protecta® Anchorage Devices



AM210



AM211



2199938



AJ720A

3M Order Code	Model #	Description
70007649455	2199938	RailDog™ Hi-Vis Sliding Rail Anchor
70007629580	AJ720A	Concrete anchor (includes mechanical fixings)
70007780839	AM210	Fixed anchorage plate
70007781571	AM211	Fixed anchoring ring



Body Harnesses

Safety harnesses provide comfort and confidence, and directly affects the user's productivity, as well as giving them flexibility to do what needs to be done on the job site. 3M has the latest in full body harness protection. DBI-SALA® and PROTECTA® harnesses - ExoFit STRATA™, ExoFit NEX™, Delta™, PRO and FIRST™ - have earned a reputation as top full body harnesses for maximum comfort, freedom of movement and ease-of-use.

3M™ DBI-SALA® ExoFit STRATA™ Full-Body Harnesses

No other harness compares.

The most comfortable, lightest-wearing, truly innovative safety harness ever created: the ExoFit STRATA™. Featuring the exclusive LIFTech™ load distribution system, the ExoFit STRATA™ literally takes the weight off your shoulders and redistributes it down to your hips, dramatically reducing shoulder strain and fatigue.

Features and Benefits:

- Keeps your back cool**
 - Polarmesh™ Padding - Allows greater airflow to your back, providing superior breathability to keep you cool.
- Unleashes your mobility**
 - Revolver™ Vertical Torso Adjuster - Easily stores excess webbing, locking it in place and out of your way while maintaining the perfect fit.
- Memory Fit Web Lock**
 - Duo-Lok™ Quick Connect Buckles - Lightweight one-handed use, ensures fast, non-slipping connections.
- Secures your safety**
 - Tech-Lite™ Aluminium Front, Dorsal & Side D-Rings - Maximise reliability without adding extra weight.
- Connects you quickly**
 - Ez-Link™ Quick SRL Adapter - Simplifies connecting and disconnecting your personal self retracting lifeline.
- Frees your shoulders**
 - Liftech™ Load Distribution System - Redistributes the weight from pressure points on your shoulders and spreads it out to the base of your hips.



BONUS
Storage Bag

3M™ DBI-SALA® ExoFit STRATA™ Construction Harness

Ideal for the professional performing construction, rigging, ladder climbing and general height safety work where the use of a Personal SRL is used on a regular basis.

Front and rear Tech-Lite™ aluminium D-rings, EZ-Link™ quick SRL adapter, LIFTech™ load distribution system, Revolver™ vertical torso adjusters, Duo-Lok™ quick connect buckles, PolarMesh™ padding, wide padded lower back/ hip pad, waist belt, suspension trauma straps, confined space loops, impact indicator and REPEL™ technology webbing.



3M Order Code	Model #	Description
70007949574	903S2018	Small
70007947321	903M2018	Medium
70007951422	903L2018	Large
70008291406	903XL2018	Extra Large

3M™ DBI-SALA® ExoFit STRATA™ Utility Harness

Ideal for the professional performing work positioning, construction, rigging, ladder climbing and general height safety work where the use of a Personal SRL is used on a regular basis.

Front, rear and side Tech-Lite™ aluminium D-rings, EZ-Link™ quick SRL adapter, LIFTech™ load distribution system, Revolver™ vertical torso adjusters, Duo-Lok™ quick connect buckles, PolarMesh™ padding, wide padded lower back/ hip pad, waist belt, suspension trauma straps, confined space loops, impact indicator and REPEL™ technology webbing.



3M Order Code	Model #	Description
70007947339	923S2018	Small
70007945663	923M2018	Medium
70007949616	923L2018	Large
70007953097	923XL2018	Extra Large

3M™ DBI-SALA® ExoFit STRATA™ Riggers Harness

Ideal for use as a professional general purpose harness in rigging, ladder climbing and confined space access work where the use of a Personal SRL is used on a regular basis.

Front and rear Tech-Lite™ aluminium D-rings, EZ-Link™ quick SRL adapter, Revolver™ vertical torso adjusters, Duo-Lok™ quick connect buckles, PolarMesh™ padding, suspension trauma straps, confined space loops, impact indicator and REPEL™ technology webbing.



3M Order Code	Model #	Description
AT010614892	903S2006	Small
70804414236	903M2006	Medium
AT010614884	903L2006	Large
AT010614900	903XL2006	Extra Large

3M™ DBI-SALA® ExoFit NEX™ Full-Body Harnesses

The ultimate full-body comfort harnesses.

ExoFit NEX™ harnesses are the most advanced harnesses in the industry. They're the culmination of our experience with ExoFit™ and ExoFit™ XP, ongoing research and the incorporation of new materials and innovative features.

Features and Benefits:

- Stand-Up Dorsal D-ring**
 - Patented spring-loaded design automatically stands-up, ensuring fast, easy and safe connections to your fall arrest system.
- Covered Labels and RFID equipped**
 - A Velcro® cover protects harness labels.
- Impact Indicator**
 - Rip-stitch indicators allow you to inspect the harness at a glance, for prior damaging impact loads.
- Revolver™ Vertical Torso Adjusters**
 - Simple and fast adjustments that eliminate loose ends and lock into place, preventing slippage.
- Tech-Lite™ Aluminium D-rings**
 - Extremely lightweight alloy commonly used in military and aerospace offers a higher level of security and comfort.
- Integrated Suspension Relief Straps**
 - Provide an adjustable, continuous loop for post fall, offering suspension relief.
- Reflective Material**
 - For greater visibility in dark and dangerous environments, reflective material is integrated on legs, chest, shoulders and back.
- Ultra-Soft Edging**
 - Moves with you - doesn't rub or chafe.
- Hybrid Comfort Padding**
 - Lightweight, moisture wicking, and breathable padding won't move or slip, keeping the wearer comfortable at all times.
- Lanyard Keepers**
 - Easy holstered snap hooks breakaway to avoid trip hazard.
- Built-In Carrying Pocket**
 - Conveniently holds and protects a mobile phone, camera, or other items.
- REPEL™ Technology Webbing**
 - Water repellent to reduce attraction of mould and dirt - also has up to 5 times more abrasion resistance.
- Rigid Hip Padding Loops**
 - Prevents equipment pouches from sagging and reduces abrasion in vulnerable areas.
- Duo-Lok™ Quick-Connect Buckles**
 - Lightweight one-handed use with memory-fit web-lock ensures fast, non-slipping connections.



BONUS
Harness storage
back pack with every
ExoFit NEX™ harness

*30 Day Comfort Guarantee on all ExoFit NEX™ harnesses. If you're not completely satisfied, return your ExoFit NEX™ harness within 30 days of purchase for a full refund.

3M™ DBI-SALA® ExoFit NEX™ Riggers Harness

Ideal for use as a professional general purpose harness in rigging, ladder climbing and confined space access work.

Front and rear Tech-Lite™ aluminium D-rings, Duo-Lok™ quick-connect buckles, Revolver™ vertical torso adjusters, non-slip hybrid comfort padding, suspension trauma straps, confined space retrieval/attachment points, impact indicator, REPEL™ technology webbing.



3M Order Code	Model #	Description
70007925673	603S2018	Small
70007925467	603M2018	Medium
70007926127	603L2018	Large
70007938429	603XL2018	Extra Large

3M™ DBI-SALA® ExoFit NEX™ Confined Space Harness

Ideal for the professional performing confined space access work, ladder access and rescue.

Front, rear and side Tech-Lite™ aluminium D-rings, Duo-Lok™ quick-connect buckles, Revolver™ vertical torso adjusters, non-slip hybrid comfort padding, wide padded lower back/hip pad, suspension trauma straps, confined space retrieval/attachment points, impact indicator, REPEL™ technology webbing.



3M Order Code	Model #	Description
70007929378	623S2018	Small
70007926010	623M2018	Medium
70007925798	623L2018	Large
70007925764	623XL2018	Extra Large

3M™ DBI-SALA® ExoFit NEX™ Wind Energy Harness

Ideal for the professional wind tower worker, uniquely designed with specialised features for wind energy needs.

Front and rear Tech-Lite™ aluminium D-rings, side D-rings, Duo-Lok™ quick-connect buckles, Revolver™ vertical torso adjuster, wide padded lower back/hip pad, removable tongue buckle waist belt, dorsal webbing and lumbar protectors, built in radio holster, tool D-rings, non-slip hybrid comfort padding, suspension trauma straps, impact indicator REPEL™ technology webbing.



3M Order Code	Model #	Description
70007930723	603S4044	Small
70007930699	603M4044	Medium
70007943759	603L4044	Large
70007960613	603XL4044	Extra Large

3M™ DBI-SALA® ExoFit NEX™ Cross-Over Harness

Ideal for the professional performing roof construction, maintenance and ladder access work.

Front and rear Tech-Lite™ aluminium D-rings, Duo-Lok™ quick-connect buckles, Revolver™ vertical torso adjuster, non-slip hybrid comfort padding, suspension trauma straps, impact indicator, REPEL™ technology webbing.

Note: Ideal for women



3M Order Code	Model #	Description
70007946505	613S2016	Small
70007926655	613M2016	Medium
70007941803	613L2016	Large
70007936696	613XL2016	Extra Large

3M™ DBI-SALA® ExoFit NEX™ Tower Workers Harness

Ideal for the professional performing pole work, rigging and work positioning.

Front, rear and side Tech-Lite™ aluminium D-rings, Duo-Lok™ quick-connect buckles, Revolver™ vertical torso adjusters, wide padded lower back/hip pad, work positioning suspension seat with tanged pole D-rings (can be secured out of the way for unhindered climbing), non-slip hybrid comfort padding, suspension trauma straps, impact indicator, REPEL™ technology webbing.



3M Order Code	Model #	Description
70007935102	653S4016	Small
70007926366	653M4016	Medium
70007928917	653L4016	Large
70007943510	653XL4016	Extra Large

3M™ DBI-SALA® ExoFit NEX™ Suspension Harness with Chest Ascender

Ideal for the professional ascending working lines.

Front, rear, side and abdominal Tech-Lite™ aluminium D-rings, integral chest ascender, Duo-Lok™ quick-connect buckles, padded lower back/hip pad, gear loops, non-slip hybrid comfort padding, REPEL™ technology webbing.



3M Order Code	Model #	Description
70007928693	783S4010	Small
70007931101	783M4010	Medium
70007933883	783L4010	Large
70007948998	783XL4010	Extra Large

Also available: models with additional features suitable for specific industry applications



3M™ DBI-SALA® Delta™ Full-Body Harnesses

The safety harness that won't weigh you down.

Delta™ harnesses combine a set of "industry-first" advancements, with popular features making them the workhorse of the industry. Today's Delta™ represents the culmination of more than twenty years of design, research, manufacturing know-how and on-the-job performance.

Features and Benefits:

REPEL™ Technology Webbing

- Water repellent to reduce attraction of mould and dirt - up to 5 times more abrasion resistance.

Quick-Connect Buckles

- Offers one-handed operation and smooth adjustment.

Easy Grip End Tabs and Keepers

- For fast, efficient and secure web adjustment.

Stand-Up Dorsal D-Ring

- Patented spring-loaded design automatically stands up ensuring fast, easy and safe connections to your fall arrest system.

Impact Indicator

- Rip-stitch indicator allows the user to quickly and easily inspect the harness for impact loading.

Label Pack

- Laminated PVC labels resistant to abrasion, UV, ambient heat, water and a wide range of chemicals. Features permanent indented print of critical product information ensuring it remains visible for the life of the harness.

RFID equipped

- Helps track equipment and manage safety inspection programs.



3M™ DBI-SALA® ExoFit NEX™ Climbing Harness

Ideal for the professional performing rescue and emergency services, industrial rope access, abseiling and tower work.

Front, rear, side and abdominal Tech-Lite™ aluminium D-rings, Duo-Lok™ quick-connect buckles, padded lower back/hip pad, tool & gear loops, non-slip hybrid comfort padding, REPEL™ technology webbing.



3M Order Code	Model #	Description
70007939559	683S4016	Small
70007931937	683M4016	Medium
70007938502	683L4016	Large
70007947370	683XL4016	Extra Large

3M™ DBI-SALA® ExoFit NEX™ Flotation Harness

Ideal for the professional requiring both fall and buoyancy protection in open or closed waters.

275N integral personal flotation device, rear stainless steel D-ring, front fall arrest loops, stainless steel quick-connect buckles, non-slip hybrid comfort padding, suspension trauma straps, impact indicator, REPEL™ technology webbing (also available with 300N MED/SOLAS personal flotation device).



3M Order Code	Model #	Description
70008280318	603S1034	Small 275N
70007936233	603M1034	Medium 275N
70007941191	603L1034	Large 275N
70007945168	603XL1034	Extra Large 275N
70008286240	603S1036	Small 300N
70007943023	603M1036	Medium 300N
70007946786	603L1036	Large 300N
70007956421	603XL1036	Extra Large 300N

3M™ DBI-SALA® ExoFit NEX™ Suspension Harness

Ideal for the professional performing rescue and emergency services, industrial rope access, abseiling and tower work.

Front, rear, side and abdominal Tech-Lite™ aluminium D-rings, Duo-Lok™ quick-connect buckles, padded lower back/hip pad, gear loops, non-slip hybrid comfort padding, REPEL™ technology webbing.



3M Order Code	Model #	Description
70007934402	783S4016	Small
70007931028	783M4016	Medium
70007927661	783L4016	Large
70007934469	783XL4016	Extra Large



BONUS
Harness storage bag with every Delta™ harness

3M™ DBI-SALA® Delta™ Riggers Harness

Ideal for use in rigging, confined space, ladder access and general height safety.

Large rear fall arrest rated stand-up D-ring, front fall arrest rated D-ring, confined space/retrieval attachment points, quick-connect buckles, corrosion resistant hardware, fully adjustable, REPEL™ technology webbing.



3M Order Code	Model #	Description
70007926416	803S0018	Small
70007925822	803M0018	Medium
70007925707	803L0018	Large
70007925046	803XL0018	Extra Large

3M™ DBI-SALA® Delta™ Cross-Over Harness

Ideal for use in roof construction, maintenance and ladder access work.

Large rear fall arrest rated stand-up D-ring, front fall arrest D-ring, quick-connect buckles, corrosion resistant hardware, fully adjustable, REPEL™ technology webbing

Note: Ideal for women



3M Order Code	Model #	Description
70007934378	813S0016	Small
70007932083	813M0016	Medium
70007925251	813L0016	Large
70007946752	813XL0016	Extra Large

3M™ DBI-SALA® Delta™ Riggers Comfort Harness

Ideal for use in rigging, confined space, ladder access and general height safety.

Large rear fall arrest rated D-ring, front fall arrest rated D-ring, confined space retrieval attachment points, quick connect buckles, aluminium hardware, fully adjustable, REPEL™ technology webbing, built-in shoulder, back and leg comfort padding.



3M Order Code	Model #	Description
70007937728	833S2018	Small
70007927455	833L2018	Large
70007931218	833M2018	Medium
70007935573	833XL2018	Extra Large

3M™ DBI-SALA® Delta™ BA Rescue/Escape Harness

Ideal for use with rescue/escape breathing apparatus equipment.

Large rear fall arrest rated D-ring, front fall arrest rated D-ring, confined space/retrieval attachment points, quick-connect buckles, stainless steel hardware, air line attachment straps, rear BA pigtail connection strap, fully adjustable, REPEL™ technology webbing.

Note: Hip mounted escape cylinder bag to be supplied by customer for attachment to harness



For illustrative purposes only. Breathing Apparatus not included.

3M Order Code	Model #	Description
70008288378	823S1050	Small
70007964128	823M1050	Medium
70008288360	823L1050	Large
70008288394	823XL1050	Extra Large

3M™ DBI-SALA® Delta™ All Purpose Harness

Ideal for use in multi purpose access including confined space entry, rigging, ladder access work and work positioning at height.

Large rear fall arrest rated stand-up D-ring, front fall arrest rated D-ring, confined space/retrieval attachment points, waist belt with side D-rings, quick-connect buckles, corrosion resistant hardware, fully adjustable, REPEL™ technology webbing.



3M Order Code	Model #	Description
70007930806	823S0018	Small
70007925855	823M0018	Medium
70007925616	823L0018	Large
70007927141	823XL0018	Extra Large

3M™ DBI-SALA® Delta™ Tower Workers Harness

Ideal for use by telecommunications and power industry personnel when working on towers and poles.

Large rear fall arrest rated stand-up D-ring, frontal fall arrest/belay loops, confined space/retrieval attachment points, padded waist belt with side D-rings, pole/restraint D-rings, quick-connect buckles, corrosion resistant hardware, fully adjustable, REPEL™ technology webbing.



3M Order Code	Model #	Description
70007936365	853S0018	Small
70007925160	853M0018	Medium
70007928818	853L0018	Large
70007932042	853XL0018	Extra Large

3M™ DBI-SALA® Delta™ Cross-Over Comfort Harness

Ideal for use in roof construction, maintenance and ladder access work.

Large rear fall arrest rated D-ring, front fall arrest rated D-ring, quick-connect buckles, corrosion resistant hardware, fully adjustable, REPEL™ technology webbing, built-in shoulder, back and leg comfort padding.

Note: Ideal for women



3M Order Code	Model #	Description
70007943221	843S2016	Small
70007950911	843L2016	Large
70007935714	843M2016	Medium
70007935722	843XL2016	Extra Large

3M™ DBI-SALA® Delta™ BA Harness

Ideal for Use with large cylinder breathing apparatus equipment.

Dorsal extension with large fall arrest rated D-ring, front fall arrest rated D-ring, confined space/retrieval attachment points, quick-connect buckles, waist belt with side D-rings, stainless steel hardware, wide padded lower back/hip pad, shoulders, back and waist protection pad with tank attachment straps, fully adjustable, REPEL™ technology webbing.



For illustrative purposes only. Breathing Apparatus not included.

3M Order Code	Model #	Description
70008288386	823S1051	Small
70007952602	823M1051	Medium
70007950820	823L1051	Large
70008288402	823XL1051	Extra Large

3M™ DBI-SALA® Delta™ Miners Harness

Ideal for use by mining industry personnel for use with battery packs and self rescuers.

Large rear fall arrest rated stand-up D-ring, front fall arrest rated D-ring, confined space/retrieval attachment points, integral miners belt with battery and self rescue straps, reflective tape, suspension trauma straps, quick-connect buckles, corrosion resistant hardware, fully adjustable, REPEL™ technology webbing.



3M Order Code	Model #	Description
70007947362	823S0035	Small
70007934790	823M0035	Medium
70007929410	823L0035	Large
70007932737	823XL0035	Extra Large

3M™ DBI-SALA® Delta™ Live Line & Standard Linesman Harness
(Resistant to electrical conductivity)*

Ideal for use when working on high and low voltage live lines from an EWP vehicle.

Rear fall arrest rated webbing loop with integrated dorsal extension, frontal fall arrest/belay loops, confined space retrieval/attachment points, leather insulators, no metal hardware above the waist, quick-connect buckles, corrosion resistant hardware, fully adjustable, REPEL™ technology webbing

*No metal hardware above the waist



3M Order Code	Model #	Description
70007937165	803S0009	Small
70007935292	803M0009	Medium
70007937082	803L0009	Large
70007937090	803XL0009	Extra Large
70007926671	863M4019	Med (linesman)

3M™ DBI-SALA® Delta™ Welders Harness*

Ideal for use in 'Hot Work' and arc flash environments.

Rear stand-up D-ring, front fall arrest rated loops, confined space loops, Nomex®/Kevlar® fibre webbing, dielectric hardware.

Note: Specially designed Welders Lanyards are also available to complement/use with this harness.

*Arc flash, flame, heat and cut resistant



3M Order Code	Model #	Description
70007932851	320S2066NK	Small
70007927729	320M2066NK	Medium
70007930459	320L2066NK	Large
70007945218	320XL2066NK	Extra Large

3M™ DBI-SALA® Fall Protection Kits

Suited for specific worker applications, our kits include all the necessary components of the ABC of fall protection to ensure worker safety.



3M Order Code	Model #	Description
70007930988	1900-0004	Construction Workers Kit , includes: Delta™ 380M-0018 All Purpose Harness, 3101000 2.4 m Talon™ SRL's, Z90203636 EZ-Stop™ 2.0 m Lanyard, E849-015 Tie-Off Adaptor, 1900-0000 Equipment/Kit Bag. Also available with small, large or extra large harness.
70007928529	1900-0005	Professional Roof Workers Kit , includes: Delta™ 360M-0016 Roof Workers Harness, Z90103636 EZ-Stop™ 1.0 m Lanyard, P6711-015-36-58 15 m Rope and Rope Grab, R-105-S Screw Gate Karabiner, E849-015 Tie-Off Adaptor, 1900-0000 Equipment / Kit Bag. Also available with small, large or extra large harness.
70007948238	1900-0027	Professional Roof Workers Kit without harness , includes: Z90103636 EZ-Stop™ 1.0 m Lanyard, P6711-015-36-58 15 m Rope and Rope Grab, R-105-S Screw Gate Karabiner, E849-015 Tie-Off Adaptor, 1900-0000 Equipment / Kit Bag

3M™ DBI-SALA® Miners Belts



3M Order Code	Model #	Description
70007928412	E100M-0051	Medium, with rear D-ring, battery pack and self rescue straps with velcro, reflective tape on rear
70007937843	E100M-0179	Medium, with rear D-ring, fixed braces, battery pack and self rescue straps with velcro, reflective tape on front and rear
70007939047	E100M-0837	Medium, with 2 front D-rings, detachable braces, battery pack and self rescue straps, reflective tape on front and rear
70007942058	E112M-0033	Medium, with detachable battery pack and self rescue straps, 2 front D-rings, reflective tape along entire length of belt

Note: Miners belts are available in small, medium, large and extra large sizes.

Also available: models with additional features suitable for specific industry applications

3M™ Protecta® Pro™ Harnesses

Quality and safety for everyday workers.

Full-body harnesses are genuine working tools that allow you to get on with your job without worrying about safety. That's why our all new re-designed and upgraded 3M™ Protecta® PRO Full-Body Harness Range offers a choice of harnesses for every possible working environment, from general construction to tower work.

Features and Benefits:

- Buckle Options**
 - Pass Through for simple, safe connection.
- Chest Strap**
 - Optimum position for connection to lanyards and systems.
 - Keeps connectors out of the users face.
- Spring Loaded Torso Adjusters**
 - Spring loaded grip bar ensures no webbing slippage.
 - Easier to adjust with pull down adjustment.
- Webbing Management**
 - Spare torso webbing stored through hip strap.
 - All stitch blocks are away from the body for greater comfort.
- Contrasting Leg & Chest Strap**
 - Reduces donning time.
- Large Rear D-ring**
 - Easier to connect, increased safety.
 - Can be used for rescue.
- Protected Labels**
 - Protective Velcro® sealed pouch.
 - Ensures easy identification and inspection.



3M™ Protecta® Pro Riggers Harness

Ideal for rigging, rescue, construction, elevated work platforms, work positioning, ladder access work, confined space access and general height safety.

Front & rear fall arrest rated D-ring, confined space retrieval/attachment points, easy adjust hardware, sub-pelvic strap, adjustable chest, shoulder & leg straps.



3M Order Code	Model #	Description
70007951984	AB123S	Small
70007950937	AB123M	Medium
70007951695	AB123L	Large
70007953014	AB123XL	Extra Large

3M™ Protecta® Pro Scaffolders Harness

Ideal for scaffolding, rigging, rescue, construction, ladder access work, roof work and general height safety.

Front & rear fall arrest rated D-ring, confined space retrieval/attachment points, easy adjust hardware, sub-pelvic strap, padded heavy duty comfort tool belt, adjustable chest, shoulder & leg straps.



3M Order Code	Model #	Description
70804400649	AB125S	Small
70007950945	AB125M	Medium
70008280417	AB125L	Large
70804400656	AB125XL	Extra Large

3M™ Protecta® Pro All Purpose Harness

Ideal for use in multi purpose applications including confined space entry, rigging, construction, ladder access work, positioning and general height safety.

Front & rear fall arrest rated D-ring, confined space retrieval/attachment points, easy adjust hardware, sub-pelvic strap, integrated shoulder & lower back/hip pads, adjustable chest, shoulder & leg straps.



3M Order Code	Model #	Description
70008280474	AB124S	Small
70007950929	AB124M	Medium
70007952594	AB124L	Large
70007953048	AB124XL	Extra Large

3M™ Protecta® Pro Riggers Harness with Adjustable Integral Lanyard & Scaffold Hook



3M Order Code	Model #	Description
70804400680	AB126-34S	Small
70804400672	AB126-34M	Medium
70804400664	AB126-34L	Large
70804400698	AB126-34XL	Extra Large

3M™ Protecta® Pro Riggers Harness with Adjustable Integral Lanyard & Snap Hook



3M Order Code	Model #	Description
70804400706	AB126-36S	Small
70008280060	AB126-36M	Medium
70007952867	AB126-36L	Large
70804400714	AB126-36XL	Extra Large

3M™ Protecta® Pro Welders Harness

Ideal for use during welding, cutting, electrical maintenance and other high temperature 'Hot Work' applications

Large rear fall arrest rated D-ring, Front fall arrest rated D-ring, Pass-thru buckles on chest and leg straps, Durable polyester Kevlar® fibre webbing construction.

Kevlar® is a registered trademark of E.I. du Pont de Nemours and Company



3M Order Code	Model #	Description
70804400805	AB128S	Small
70007952966	AB128M	Medium
70804400797	AB128L	Large
70008280029	AB128XL	Extra Large

3M™ Protecta® Construction Workers Kit



3M Order Code	Model #	Description
70007930384	AA410AU	Pro Climbing Harness (AB123M), 3.3 m Rebel Personal SRL (3100447), 1.5 m round anchor strap (AM450/150AU), backpack storage bag

3M™ Protecta® Pro Riggers Harness with Elasticated Integral Lanyard & Snap Hook



3M Order Code	Model #	Description
70804400771	AB127-36S	Small
70804400763	AB127-36M	Medium
70804400755	AB127-36L	Large
70804400789	AB127-36XL	Extra Large

3M™ Protecta® Pro Riggers Harness with Elasticated Integral Lanyard & Scaffold Hook



3M Order Code	Model #	Description
70804400730	AB127-34S	Small
70007952982	AB127-34M	Medium
70804400722	AB127-34L	Large
70804400748	AB127-34XL	Extra Large

3M™ Protecta® Pro Tower Workers Harness

Ideal for Use in linesman/ tower work, and industries where a harness must be used for climbing, suspension, positioning or rescue

Front & dorsal fall arrest rated D-ring, pelvic strap, confined space retrieval/attachment points, adjustable waist belt, leg, shoulder & chest straps, side D-rings, tool loops, integral dorsal extension, pole / restraint side attachment points, work positioning buttock seat, wide padded lower back pad



3M Order Code	Model #	Description
70804400813	AB129-2S	Small
70007952859	AB129-2M	Medium
70007951976	AB129-2L	Large
70804400821	AB129-2XL	Extra Large

Pro Roof Workers Kit

3M Order Code	Model #	Description
70007928479	AA400AU	Pro Climbing Harness (AB123M), 15 m kernmantle rope lifeline with 0.55 m integral shock absorbing lanyard, 1.5 m tie-off adaptor anchor strap (AM500/150AU), backpack storage bag

3M™ Protecta® First™ Harness

Fall protection that's there when you need it.

Every at height worker deserves to be safe, no matter the size or nature of the job. That's why Protecta® products have become the choice of safety managers looking for reliable fall protection solutions that comply with safety regulations and help their workers get the job done.

Features and Benefits:

Multiple attachment points

- Front, rear, side D-rings for multiple work positions.

Confined space access

- Shoulder retrieval attachment points.

Added comfort

- Waist belt and padded hip/lower back pad.



3M™ Protecta® First™ Construction Harness

Construction harness with front, rear, side D-rings, retrieval attachment points, waist belt and padded hip/lower back pad.



3M Order Code	Description
AT010621582 1390062A	Medium

3M™ Protecta® First™ Industrial Harness

Industrial harness with front and rear fall arrest rated D-ring, adjustable leg, chest & pelvic straps.



3M Order Code	Description
AT010621574 1390061A	Medium

Industrial harness with integral lanyard w/snap hook



3M Order Code	Description
AT010621590 1390063A	Adjustable 2m Lanyard, Snap hook end

Industrial harness with integral lanyard w/scaffold hook



3M Order Code	Description
AT010621608 1390064A	Adjustable 2m Lanyard, Scaffold hook end

3M™ Protecta® Fall Protection Kits



AA1000AU

First™ Construction Workers Kit

3M Order Code	Description
70007929576 AA1020AU	First Fall Arrest Harness (AB17510AU), 1.8 m Rebel Personal SRL (3100445), 1.5 m round anchor strap (AM450/150FAU), packed in a rugged re-useable carry bucket

First™ Roof Workers Kit

3M Order Code	Description
70007925012 AA1000AU	First Fall Arrest Harness (AB17510AU), 15 m kernmantle rope lifeline with 1 m integral shock absorbing lanyard, 1.5 m round anchor strap (AM450/150FAU), packed in a rugged re-useable carry bucket

3M™ Protecta® Miners Belts

PVC coated detachable battery pack and self rescue straps, reflective tape, single rear D-ring, double D-ring at front and padded waist pad.



AB001AU

AB002AU

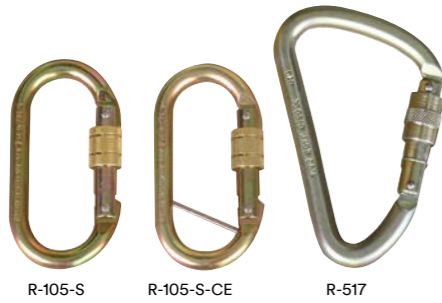
3M Order Code	Model #	Description
70007946158 AB001AU	AB001AU	Belt model
70007945556 AB002AU	AB002AU	Belt with integral crossover shoulder straps



Connectors

Specific jobsites call for unique connectors. That's why we developed a complete line, all rigorously tested to meet almost all applications.

3M™ DBI-SALA® Karabiners Double Action Screw Gate



3M Order Code	Model #	Description
70007925020	R-105-S	18 mm gate opening
70007927372	R-105-S-CE	18 mm gate opening with captive eye
70007928057	R-517	26 mm gate opening, 16 kN

3M™ DBI-SALA® Karabiners Triple Action Autolock



3M Order Code	Model #	Description
70007926986	R-113	20 mm gate opening with captive eye, 16 kN
70007930558	R-119	20 mm gate opening with captive eye (stainless steel), 16 kN

3M™ DBI-SALA® Cobra Automatic Rope Grab



3M Order Code	Model #	Description
70007926960	AC202/02AU	Horizontal/vertical work. Includes karabiner and integral shock pack, for use on 12-14 mm 3 strand rope or 11-13 mm kernmantle rope
70007956975	AC202/03AU	For vertical/horizontal use. Includes triple action stainless steel karabiner and integral shock pack, for use on 12-14 mm 3 strand rope or 11-13 mm kernmantle rope

3M™ DBI-SALA® Karabiners Double Action Autolock



3M Order Code	Model #	Description
70007925079	2000117	20 mm gate opening with captive eye, 16 kN
70007928651	2000114	54 mm gate opening with captive eye, 16 kN

3M™ DBI-SALA® Scaffold Hooks



3M Order Code	Model #	Description
70007935623	H202	110 mm gate opening

3M™ DBI-SALA® Vertical Systems

- Also available:
- Specialty Lad-Saf™ climb assist systems
 - Railok™ 90 rail systems



Lad-Saf™ Kits

3M Order Code	Model #	Description
70007928578	LS-B	Bolt on system, galvanised
70007928511	LS-W	Weld on system, galvanised

Also available stainless steel model

Lad-Saf™ Sleeve

3M Order Code	Model #	Description
70007484242	6160052	Lad-Saf X3+ Detachable Cable Sleeve

3M™ DBI-SALA® Rope Lifeline Assembly

15 m system, 11 mm Kernmantle rope lifeline with sewn thimble eye, snap hook at one end and sewn end stop on the other.
Also available: 20, 25, 30 and 50m system lengths



3M Order Code	Model #	Description
70007934055	E711-015-36-58	Lifeline Assembly
70007927182	P6711-015-36-58	Lifeline with Integral Manual Rope Grab (horizontal / angle work)
70007931903	P67110153658Z	Lifeline with Integral Manual Rope Grab and shock absorbing lanyard (horizontal / angle work)

3M™ DBI-SALA® Wire Pole Straps



3M Order Code	Model #	Description
70007941134	E850-3.0M	3 m Wire Core Pole Strap with Rope Grab & Double Action Snap Hook. Also Available: 4 m

3M™ DBI-SALA® Rope Pole Straps



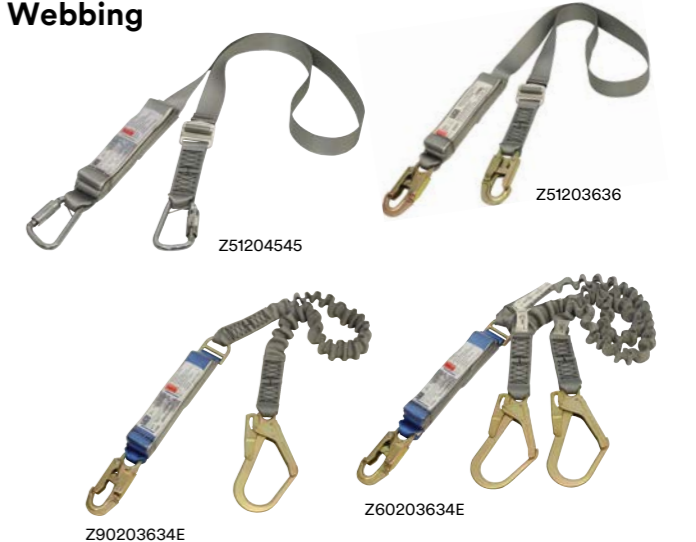
3M Order Code	Model #	Description
70007927687	E90252559	2 m Rope Pole Strap with lightweight rope grab adjuster and R-119 stainless steel triple action karabiners on both ends. Also Available: 2.5 m and with a range of end fittings

3M™ DBI-SALA® Webbing Pole Straps



3M Order Code	Model #	Description
70007927653	E601-020	2 m Pole Strap with Double Action Snap Hooks & Friction Adjuster. Also Available: 2.5 m and 3 m
70007928008	E613-B-020-56-56	2 m Pole Strap with Light Weight Aluminium Double Action Snap Hooks & Friction & Adjuster Plate. Also Available: 2.5 m and 3 m
70007934550	E613RPY0250909	2.5 m REPEL™ Pole Strap with REPEL™ Technology Webbing, Double Action Trigger Snap Hooks and Friction & Adjuster Plate. Also Available: 3 m and 3.5 m

3M™ DBI-SALA® EZ-Stop™ Shock Absorbing Lanyards Webbing



3M Order Code	Model #	Description
70007926887	Z51203636	Single tail, adjustable 2.0 m overall length
70007933925	Z51204545	Single tail, adjustable, 2.0 m overall length
70007928750	Z90203634E	Single tail, elasticated 2.0 m overall length
70007927133	Z60203634E	Double tail, elasticated rope 2.0 m overall length

3M™ DBI-SALA® force2™ Shock Absorbing Lanyards

Built for toughness and exceptional performance - trust the best!

All DBI-SALA Force2 shock absorbing lanyards are available in either single or double tail configurations constructed from webbing, wire or rope in a variety of styles (elasticated, non-elasticated, adjustable and tie-back), and are available with a wide combination of hook & karabiner terminations to suit your specific needs and applications.

Features and Benefits:

- Smallest shock absorber in the world 66% smaller* & 40% lighter*
- Expanded range of connectors for all industry applications and demands
- Lightest & strongest connector combinations on the market
- REPEL™ Technology webbing
- Shock absorber includes HI-10™ high tenacity fiber energy management material
- Protected labels
- RFID equipped
- All new triple action snap & scaffold hooks
- 16 kN gate strength on all hooks/karabiners



3M™ DBI-SALA® force2™ Shock Absorbing Lanyards Webbing Range



3M Order Code	Model #	Description
70007925608	Z11200909	Single tail adjustable 0, 2.0 m overall length. Available in either flat webbing (adjustable or non adjustable), or elasticated webbing variants.
70007925418	Z12202519E	Twin tail, elasticated, 2.0 m overall length. Available in either flat webbing (adjustable or non adjustable), or elasticated webbing variants.
70007949277	Z10202572WB	WrapBax™ Tie-Back, Single tail, 2.0 m overall length. Available in flat webbing in either single or twin tail variants.
AT019425548	Z10202580E	Comfort Grip Connector Force 2 Single Elasticated, 2mAluminium Snap Double Action

3M™ DBI-SALA® force2™ Shock Absorbing Lanyards Cable & Rope Range



3M Order Code	Model #	Description
70007931960	Z10200909R	Single tail, 2.0 m overall length
70007925889	Z12202519R	Twin tail, 2.0 m overall length
70007927190	Z13206129R	Twin tail, adjustable, 2.0 m overall length
70007929956	Z11204545CR	Cut resistant, Single tail, 2.0 m overall length
70007939757	Z10204545WR	Cable Single tail, 2.0 m overall length

If a dorsal extension is part of your harness the maximum lanyard assembly permitted is 1.7 m or less.

3M™ DBI-SALA® force2™ Shock Absorbing Wind Energy Rescue Lanyard

Incorporating rescue D-rings and heavy duty wear pads, this lanyard has been specifically designed and developed to meet the demands of the wind energy industry.



3M Order Code	Model #	Description
70007930707	Z60200919EW	Twin Tail, Elasticated, 2.0m overall length

3M™ DBI-SALA® force2™ Shock Absorbing Welders Lanyards

High temperature lanyards constructed from Nomex®/Kevlar® fibre webbing, ideal if you are welding, cutting or grinding, or in a potentially explosive or high-voltage electrical environment.



Nomex® and Kevlar® are registered trademarks of E.I. du Pont de Nemours and Company

3M Order Code	Model #	Description
70007930814	Z90200909NKE	Nomex®/Kevlar® fibre webbing, Single Tail, Elasticated, 2.0m overall length

3M™ DBI-SALA® force2™ Shock Absorbing Resist Lanyards

Coated with an extruded polyurethane coating to provide superior protection against grease, oil, paint, dirt and grime; ideal for use in the petrochemical and painting industries.



3M Order Code	Model #	Description
70007937819	Z91200909	Single Tail, 2.0m overall length

3M™ Protecta® Pro Shock Absorbing Lanyards



3M Order Code	Model #	Description
70007925442	AE529/3AU	Single tail, 2 x snap hooks, 2.0 m
70007927414	AE529/13AU	Single tail, 2 x snap hooks, 1.5 m
70007926721	AE529/25AU	Single tail, 1 x snap hook, 1 x karabiner, 1.0 m
70007940599	AE529E/3AU	Single tail, elasticated, 2 x snap hooks, 2.0 m
70007926879	AE529EY/5AU	Double tail, elasticated, 1 x snap hook, 2 x scaffold hooks, 2.0 m
70007927315	AE529Y/5AU	Double tail, 1 x snap hook, 2 x scaffold hooks, 2.0 m
70007928537	AE529ADJ/3AU	Single tail, adjustable, 2 x snap hooks, 0.75-2.0 m

3M™ Protecta® First™ Shock Absorbing Lanyard



3M Order Code	Description
AT010621624	Single Tail, 2m adjustable with snap hook on both ends
AT010621616	Twin tail, 2m with scaffold hooks on both ends

3M™ Protecta® Pole Strap



3M Order Code	Model #	Description
70007927703	AF725AU	2.5 m with adjuster, snap hooks & protective sleeve

3M™ DBI-SALA® Self Retracting Lifeline

Backed by decades of proven field service for absolute confidence!

These self retracting lifelines (SRL's) are anchored overhead and extend and retract automatically, letting you comfortably move about at your normal speed within a recommended working area.

Features and Benefits:

- Easy-to-install Connector**
 - Provides 360 degrees rotation which leaves D Ring open for rescue
- Tough and flexible webbing or galvanised cable lifelines**
 - Provides maximum range of motion, durability and cut resistance
- Integrated, backpack-style energy absorber**
 - Energy absorber and connector work together to limit forces on both the worker and the leading edge
- Impact-resistant housing**
 - Lightweight thermoplastic housing for maximum durability
- Hook or karabiner options**
 - Designed to meet your unique need the Nano-Lok comes in multiple configurations



3M™ DBI-SALA® Nano-Lok™ LE Self Retracting Lifelines



3M Order Code	Model #	Description
70007951729	3101639-75	2.4 m single webbing lifeline, steel triple action karabiner
70007446902	3101638	2.4 m single webbing lifeline, steel snap hook
70007455689	3101488	2.4 m single webbing lifeline, aluminium scaffold hook
70007462875	3500254	2.4 m single cable lifeline, steel snap hook
70007940938	3101641-75	2.4 m twin webbing lifelines, steel triple action karabiners
70007446910	3101640	2.4 m twin webbing lifelines, aluminium scaffold hooks
70007456471	3500255	2.4 m twin cable lifelines, aluminium scaffold hooks

3M™ DBI-SALA® Nano-Lok™ Self Retracting Lifelines



3M Order Code	Model #	Description
70007455226	3101330	1.8 m single webbing lifeline with quick connector anchorage connection and steel snap hook. Also available: with stainless steel or swivel snap hook
70007444188	3101331	1.8 m single webbing lifeline with quick connector anchorage connection and aluminium scaffold hook. Also available: with steel scaffold hook
70007444212	3101336	1.8 m single webbing lifeline with cab mount anchorage connection and steel swivel snap hook
70007455234	3101339	1.8 m single webbing lifeline with steel triple action karabiners. Also available: with stainless steel triple action karabiners
70007931986	3101342	1.8 m single webbing lifeline with steel triple action karabiner connection and steel scaffold hook on lifeline. Also available: with stainless steel triple action karabiner and aluminium scaffold hook
70804430034	3101343	1.8 m single webbing lifeline with quick connector anchorage connection and steel triple action karabiner. Also available: with stainless steel triple action karabiner
70007455242	3101345	1.8 m twin webbing lifelines with quick connector anchorage connection and two steel scaffold hooks. Also available: with aluminium scaffold hook

3M™ DBI-SALA® Nano-Lok™ Extended Length Self Retracting Lifelines



3M Order Code	Model #	Description
70007456174	3101615	3.4 m webbing lifeline with snap hook and quick connector for direct harness mounting
70007446944	3101644	2.8 m webbing lifeline with scaffold hook and quick connector for direct harness mounting

3M™ DBI-SALA® Ultra-Lok™ RSQ SRL



3M Order Code	Model #	Description
70007463279	3504555	15 m stainless steel cable lifeline and swivel snap hook, dual mode SRL's with rescue function (assisted rescue tool and First-Man-Up™ pole available separately if required)

3M™ DBI-SALA® Ultra-Lok™ SRL's

Rugged, lightweight and superbly engineered. The professional's choice.



3M Order Code	Model #	Description
70007447116	3103107	3.4 m webbing lifeline Also available: 6 m
70007456570	3504430	10 m galvanised cable lifeline Also available: 6 m and 15 m with either triple action Karabiners ideal for use in mining or swivel snap hook

3M™ DBI-SALA® Sealed-Blok SRL's

Sealed design makes it ideal for working in even the harshest of environments. All Sealed-Blok Self Retracting Lifelines feature an ergonomic integral carrying handle and anchorage karabiner



3M™ DBI-SALA® Fast-Line™ Lifeline Replacement Solution

FAST-Line™ allows the lifeline assembly to be replaced in the field by trained users in 4 easy steps
Contact your 3M Fall Protection Specialist for more information

3M Order Code	Model #	Description
70007450631	3400805	9 m stainless steel cable lifeline with stainless steel swivel snap hook
70007459541	3400806	9 m galvanised cable lifeline with swivel triple action karabiner
70007460077	3400950	15 m galvanised cable lifeline with swivel snap hook
70007460085	3400951	15 m stainless steel cable lifeline with stainless steel swivel snap hook
70007459772	3400866	25 m galvanised cable lifeline with swivel snap hook
70007459780	3400867	25 m stainless steel cable lifeline with stainless steel swivel snap hook
70007452074	3400971	40 m galvanised cable lifeline with swivel snap hook
70007452082	3400972	40 m stainless steel cable lifeline with stainless steel swivel snap hook

3M™ DBI-SALA® Nano-Lok™ Self Retracting Lifelines for Hot Work Use

Reinforced webbing lifelines constructed from Nomex®/Kevlar® fibre webbing to withstand sparks, weld splatter and other high heat exposure. Ideal for Welding, Grinding and High Heat Applications.



3M Order Code	Model #	Description
70007445680	3101523	1.8 m single Nomex®/Kevlar® fibre webbing lifeline with steel snap hook, karabiner harness connector
70007445672	3101521	1.8 m, single Nomex®/Kevlar® fibre webbing lifeline with steel scaffold hook, quick connector for direct harness mounting
70007455838	3101524	1.8 m, twin Nomex®/Kevlar® fibre webbing lifelines with steel scaffold hooks, quick connector for direct harness mounting

Nomex® and Kevlar® are registered trademarks of E.I. du Pont de Nemours and Company

**3M™ DBI-SALA®
Load Arrestors**



3700300

3M Order Code	Model #	Description
70007939997	3700300	12 m of galvanised cable, 300 kg load rating
70008284336	3700400	8 m of galvanised cable, 400 kg load rating
70007955027	3700501	5 m of galvanised cable, 500 kg load rating
70007964888	3700801	4 m of galvanised cable, 800 kg load rating

**3M™ DBI-SALA®
SRL Accessories**



Z6



SRL and Beam Trolley not included
8102102

3M Order Code	Model #	Description
70007933040	Z6	Shock absorbing unit for leading edge work
70007491528	8102102	Power Tagline System. Provides remote access to overhead mounted SRL's

**3M™ Protecta®
Karabiners**



AJ514 R-105-S R-105-S-CE AJ593

3M Order Code	Model #	Description
70007780581	AJ514	Double action, auto-lock, 16 mm opening
70007925020	R-105-S	Double action, screw gate, 18 mm opening
70007927372	R-105-S-CE	Double action, screw gate, 18 mm gate opening with captive eye
70007780649	AJ593	Double action, auto-lock, 50 mm opening

**3M™ Protecta®
Hooks**

*These hooks are manufactured to be permanently attached to spliced or webbing lanyards and other height safety products and are not sold separately.



2000161* AJ592

3M Order Code	Model #	Description
70007942272	2000161	Double action, snap hook, 19 mm gate opening
70007937918	AJ592	Double action, anchor hook, 89 mm opening (Sold separately)

**3M™ Protecta®
Rope Grabs &
Lifelines**



AC415MBAU



AC202



AC400

3M Order Code	Model #	Description
70007780706	AC202	Cobra Rope Grab - suits 12-14 mm 3 strand rope only (horizontal/vertical work)
70007926960	AC202/02AU	COBRA Automatic Rope Grab - with karabiner and integral shock pack, for 12-14mm 3 strand rope or 11-13mm kernmantle rope (for vertical/horizontal use)
70007956975	AC202/03AU	COBRA Automatic Rope Grab - with triple action stainless steel karabiner and integral shock pack, for 12-14mm 3 strand rope or 11-13mm kernmantle rope (for vertical/horizontal use)
70007949103	AC3000/10	10 m Cabloc Vertical Lifeline Kit Also available: AC3000/20 (20 m), AC3000/30 (30 m)
70007781688	AC400	Viper Rope Grab - suits 10.5-11 mm kernmantle rope only (horizontal work)
70007942264	AC415AU	15 m system, 11 mm kernmantle rope lifeline, karabiner, sewn thimble eye and sewn end stop Also available: AC420AU (20 m) system, AC425AU (25 m) system, AC430AU (30 m) system
70007929683	AC415MAU	15 m system, 11 mm kernmantle rope lifeline assembly system with integral manual rope grab, karabiner, sewn thimble eye and sewn end stop Also available: AC420MAU (20 m) system, AC430MAU (30 m) system
70007928495	AC415MBAU	15 m system, 11 mm kernmantle rope lifeline assembly system with integral manual rope grab and shock absorbing lanyard, karabiners, sewn thimble eye and sewn end stop Also available: AC420MBAU (20 m) system, AC430MBAU (30 m) system

**3M™ Protecta® Rebel™
Self Retracting Lifelines**

Absolute Confidence, Total Compliance

The Rebel™ self retracting lifeline (SRL) line is built to last providing an economical fall protection solution without compromising performance or safety. Rebel™ SRL's feature a 190 kg user capacity, a robust design to ensure longevity and are available in lengths from 6m to 30m.

Features and Benefits:

- Thermoplastic Housing**
 - Lightweight, compact and durable
- Stackable**
 - Housing design allows for stacking on work surfaces
- Side Cable Exit**
 - Enables smooth operation and reduces cable wear
- Galvanised and SS Cable**
 - Stainless steel option for added corrosion resistance
- Self Locking Snap Hook**
 - Automatically closes and locks for added safety. Models with triple action karabiners also available.
- Ergonomic Carrying Handle**
 - Built-in design makes transport, set-up and storage easy
- Ergonomic Cable Handle**
 - Provides added comfort and ease-of-use when making connections
- Impact Indicator**
 - Provides visual indication of fall arrest
- Swivel Hook**
 - Limits lifeline twisting
- 16 kN Gate Capacity**
 - Reduces chance of accidental disengagement ("roll-out")



All Rebel™ Self Retracting Lifelines come complete with connecting karabiners on housing:



All Rebel™ SRL's Mining Specific models feature triple action karabiners on anchorage and lifeline connectors

3M™ Protecta® Rebel™ Personal Self Retracting Lifelines

Complete with connecting karabiner on housing



3590025

3100445

3M™ Protecta® Rebel™ Self Retracting Lifelines

Complete with connecting karabiner on housing and swiveling fall indicator snap hook



3590570

3590610

3M Order Code	Model #	Description
70007458675	3590520	6 m, galvanised cable, thermoplastic housing
70007464996	3590521	10 m, galvanised cable, thermoplastic housing
70007460440	3590570	15 m, galvanised cable, thermoplastic housing
70007460549	3590610	20 m, galvanised cable, thermoplastic housing
70007460622	3590690	30 m, galvanised cable, thermoplastic housing. Also available: with stainless steel cable and aluminium housing. Mine spec models also available featuring triple action karabiners on housing and swivel impact indicating karabiners on lifeline.

3M Order Code	Model #	Description
70007443099	3100445	1.8 m, webbing, triple action karabiner
70007454393	3100447	3.3 m, webbing
70007454401	3100448	6 m, webbing
70007464855	3590025	4.5 m, galvanised cable (for hot work use)

3M™ Protecta® Pro Welders Shock Absorbing Lanyards

High Temperature Lanyards - Ideal for use during welding, cutting, electrical maintenance and other high temperature 'Hot Work' applications.



AE529/5W

AE529/9W

AE529/3W

AE529Y/3W



AE529Y/5W

AE529Y/9W

Kevlar® is a registered trademark of E.I. du Pont de Nemours and Company

3M Order Code	Model #	Description
70007944229	AE529/3W	Single tail, Kevlar® fibre webbing, 2.0 m overall length with snap hooks on both ends
70007942900	AE529/5W	Single tail, Kevlar® fibre webbing, 2.0 m overall length with snap hook and scaffold hook on tail
70007948808	AE529/9W	Single tail, Kevlar® fibre webbing, 2.0 m overall length with triple action karabiners on both ends
70007943163	AE529Y/3W	Double tail, Kevlar® fibre webbing, 2.0 m overall length with snap hooks on all ends
70007934022	AE529Y/5W	Double tail, Kevlar® fibre webbing, 2.0 m overall length with snap hook and scaffold hooks on tails
70007947156	AE529Y/9W	Double tail, Kevlar® fibre webbing, 2.0 m overall length with triple action karabiners on all ends



Descent & Rescue

Thanks to 3M, not only keeping the worker safe, but getting him safely back on terra firma has never been easier with our rescue equipment. Need rescue gear such as an automatic ascender or descender to help solve the problem? We offer the most complete line of safe and effective rescue systems in the industry, trusted by safety engineers and site directors.

3M™ DBI-SALA® 5-Piece Hoist System

The most advanced in retrieval system.

Designed for manhole and confined space entry/retrieval applications. The Davit pivots for ease of rescue and has an adjustment for overhead clearance restrictions. The lower base adjusts to fit most standard entries. A range of bases and masts are available.

Features and Benefits:

- 5-piece davit hoist system
- Integrated 5,000 lb. (22 kN) mast anchorage point
- Fall arrest rated in all davit offset mast positions
- Adjustable offset upper davit mast (model 8518001)
- Built-in primary and secondary pulleys
- Adjustable vertical height of 33 in. to 43 in. (83.8 to 109.2 cm)
- Detent and knob style adjustment
- 83.8cm lower davit mast extension (model 8518002)
- Combine up to 2 extensions
- Extends your davit mast height



3M Order Code	Model #	Description
70007932950	8518000	Includes adjustable offset mast, lightweight lower mast and 3-piece lightweight base. Also available: multiple size component configurations

3M™ DBI-SALA® Tripods



Note: Tripods come standard with integral pulley system and one quick connect winch/SRL mounting bracket.

3M Order Code	Model #	Description
70007488417	8000000	2.1 m, aluminium, square legs
70007490959	8000010	2.7 m, aluminium, square legs

3M™ DBI-SALA® Emergency Retrieval Sealed-Blok SRL's

Sealed design makes it ideal for working in even the harshest of environments. All Emergency Retrieval Sealed-Blok Self Retracting Lifelines feature an ergonomic integral carrying handle and anchorage karabiner



3M Order Code	Model #	Description
70007460069	3400944	15 m stainless steel cable lifeline with stainless steel swivel snap hook and RSQ feature
70007460093	3400955	15 m galvanised cable lifeline with swivel snap hook
70007452025	3400956	15 m stainless steel cable lifeline
70007451720	3400880	with stainless steel swivel snap
70007459830	3400881	25 m galvanised cable lifeline with swivel snap hook
70007460168	3400985	25 m stainless steel cable lifeline with stainless steel swivel snap
70007452157	3400986	40 m galvanised cable lifeline with swivel snap hook

3M™ DBI-SALA® Advanced Digital Winches

Also available: stainless steel cable and Technora rope models



3M Order Code	Model #	Description
70007496816	8518560	18 m, 5 mm galvanised cable
70007496824	8518561	27 m, 5 mm galvanised cable
70007498184	8518582	58 m, 5 mm galvanised cable

3M™ DBI-SALA® Tripods Accessories



3M Order Code	Model #	Description
70007488649	8003205	Snatch block, eye bolt pulley assembly
70007488656	8003238	Leg mount pulley bracket
70007489506	8005048	Mounting Bracket to fit SRL/Winch to Tripod Leg
70007612537	9503094	Tripod carry bag for 8000000
70007612545	9503095	2.1 m tripod, Tripod carry bag for 8000010, 2.7 m tripod

3M™ DBI-SALA® Emergency Retrieval Sealed SRL Accessories



3M Order Code	Model #	Description
70007452256	3401025	Mounting Bracket to fit Sealed Blok Retrieval SRL's to tripod leg

3M™ DBI-SALA® Salalift™ II Winch

Also available: stainless steel cable models



3M Order Code	Model #	Description
70007489712	8102001	18 m, 6 mm galvanised cable
70007489746	8102009	27 m, 5 mm galvanised cable
70007489720	8102005	36 m, 5 mm galvanised cable

3M™ DBI-SALA® Basic Digital Winches



3M Order Code	Model #	Description
70007496907	8518669	15 m galvanised cable
70007496915	8518670	15 m galvanised cable

3M™ DBI-SALA® Bosuns Chair/ Spreader Bar



3M Order Code	Model #	Description
70007926135	E522-SB1	Spreader bar with karabiner connections

3M™ DBI-SALA® Portable Fall Arrest Posts

For use on top of transformers or other types of platforms with potential fall hazards. A range of mounting bases are available for multiple applications as well as a detachable davit arm for use in rescue.
Note: Mechanical devices and attachments sold separately.



3M Order Code	Model #	Description
70007495354	8516691	Portable Fall Arrest System
70007495370	8516693	Rescue Davit Arm

3M™ DBI-SALA® Rollgliss™ R250 Rescue Kits

All R250 kits include: extension pole, rope & safety hook, mini-haul system, karabiners, anchorage slings and bags.



3M Order Code	Model #	Description
70007786976	AG62501010	10 m system. Also available: 20 m, 30 m and 50 m system lengths
70007926853	8900031	Heavy duty telescopic pole (for use with Rollgliss™ Rescue Kits)

3M™ DBI-SALA® Rollgliss™ Rescue Ladder



3M Order Code	Model #	Description
70007494928	8516294	2.4 m, includes 3 connecting karabiners
70007494951	8516316	Anchorage plate for mounting ladder to a davit arm or anchorage point

3M™ DBI-SALA® Rollgliss™ R350 Rescue System

All R350 kits include: rope unit, pulleys, rope control device with integral lanyard, anchor strap, karabiners and carry bag.



3M Order Code	Model #	Description
70007942710	R3503015	15 m system
70007947776	R3503030	30 m system
70007946778	R3503030P	30 m system, with pick pole

3M™ DBI-SALA® Rollgliss™ R550 Rescue & Escape Device – Rescue Kits

10 m system, includes R550 twin brake descender, rescue hub with drill adaptor, connecting karabiner on housing, 9.5 mm kernmantle rope with snap hooks on both ends and a storage/deployment bag.



3M Order Code	Model #	Description
70007945366	3329010	Also available: 20 m, 40 m, 60 m, 100 m, 120 m, 150 m

3M™ DBI-SALA® Side Entry System

Designed for confined space entry/retrieval and rescue operations involving horizontal entries with vertical positioning or retrieval required inside the space.
Note: Mechanical devices and attachments sold separately.



3M Order Code	Model #	Description
70007493102	8511233	Side entry system package for use with external adjustment tank collar
70007493094	8516693	Permanently mounted bases External adjustable tank collar

3M™ DBI-SALA® Bases and Mounting Options

DBI-SALA Advanced portable and Fixed bases work with a variety of davit arm and mast extensions to suit a variety of applications. **Fixed Bases** are ideal for work areas where frequent set-up and tear-down is required and a base can be permanently installed to an existing structure. **Portable Bases** are ideal when you need to move and access various confined space areas. **Also available:** a wide range of other fixed and portable bases in stainless steel and galvanised steel are also available, contact us for more information, or for assistance in determining the most appropriate base for your needs.



Fixed Bases		
3M Order Code	Model #	Description
70007932778	8518348	Wall Mount Sleeve (Stainless Steel)
70007492906	8510316	Flush Mount Sleeve (Zinc Plated Steel)
70007929709	8512831	Centre Mount Sleeve (Zinc plated Steel)

Portable Bases		
3M Order Code	Model #	Description
70007492914	8510323	Barrel Mount Sleeve (Zinc plated steel)
70007493011	8510520	Manhole Collar (Aluminium)

For more information on the complete range of DBI-SALA Confined Space safety systems and options, visit 3M.com.au/FallProtection or contact us.

3M™ DBI-SALA® Rollgliss™ R550 Rescue & Escape Device – Escape Kits

10 m system, includes R550 twin brake descender, connecting karabiner on housing, 9 mm kernmantle rope with snap hooks on both ends and a storage/deployment bag.



3M Order Code	Model #	Description
70007931325	3328010	Also available: 20 m, 40 m, 60 m, 100 m, 120 m, 150 m

3M™ DBI-SALA® Self Rescue Descender System (SRD)

All SRD kits include: descender, kernmantle rope, karabiner (SRD1 series), hammerlok with snap hook (SRD2 series), U bolt, storage/deployment box, tracer wire with R-clip, spacer and certification tag.



3M Order Code	Model #	Description
70007942017	SRD1-20	20 m system, SRD1 series Also available: 25 m and 30 m systems
70007958757	SRD2-20	20 m system, SRD2 series Also available: 25 m and 30 m systems

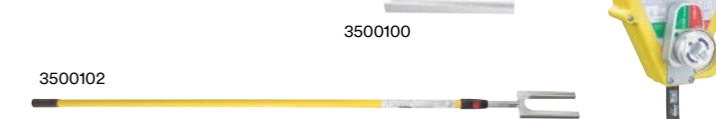
3M™ DBI-SALA® Rescumatic™ Automatic Descent Control Device

Includes two rescue restraint straps, rope spool and cable assembly.



*Limited Stock		
3M Order Code	Model #	Description
AT019425027	3300000-15	15 m system. Also available: System lengths from 5 m up to 120 m

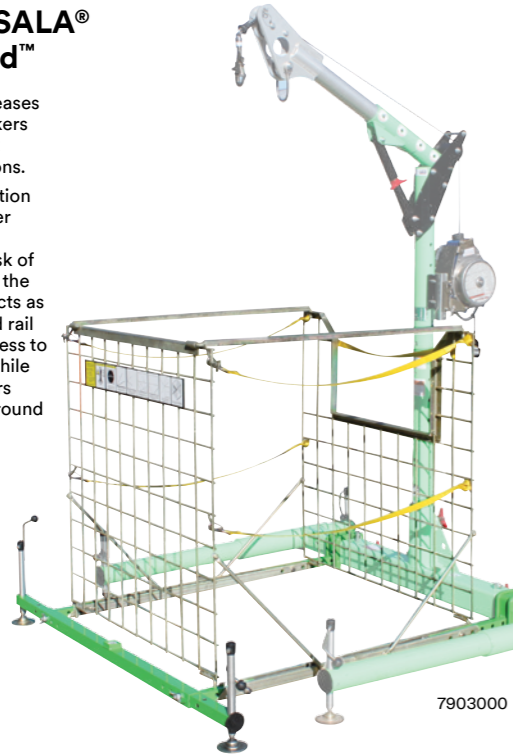
3M™ DBI-SALA® Ultra-Lok™ RSQ



3M Order Code	Model #	Description
70007463279	3504555	15 m dual mode self retracting lifeline with rescue function, stainless steel hook and cable
70007453866	3500100	Assisted rescue tool (for use on First-Man-Up™ pole)
70007453874	3500102	First-Man-Up™ pole (2.4-4.8 m) with assisted rescue tool

**3M™ DBI-SALA®
PenoGuard™**

PenoGuard™ increases the safety of workers that need to work around penetrations. In the closed position it serves as a cover for access holes eliminating any risk of falling through, in the open position it acts as a four sided guard rail allowing easy access to the penetration while protecting workers and bystanders around the hole.



3M Order Code	Model #	Description
70008288071	7903250	PenoGuard Civil
70007964219	7903000	PenoGuard Confined Space

**3M™ Protecta®
Confined
Space Rebel™
Retrieval Self
Retracting
Lifeline**

*When ordering the Rebel™ Retrieval Fall Arrest SRL for use with the Tripod, order the AT052/1 pulley and the 3590498 fixing bracket.



3M Order Code	Model #	Description
70007466314	3591002	Galvanised cable, 15 m*

**3M™ Protecta®
Confined
Space Rescue
Winch**

**When ordering the Rescue Winch for use with the Tripod, order the AT052/1 pulley. Alternatively order the complete system, part no. AT200/120/P



3M Order Code	Model #	Description
70007784153	AT200/120	Automatic locking system, 20 m**

**3M™ Protecta®
Confined
Space
Tripod and
Accessories**



3M Order Code	Model #	Description
70007932364	AM100	Tripod, 1.4 - 2.4 m
70007932380	AK0100	Tripod bag
70007780078	AT052/1	Pulley with karabiner for use on tripod
70007464897	3590498	Fixing bracket for 3591002 retrieval SRL

**3M™ Protecta®
Confined
Space Kits**



3M Order Code	Model #	Description
70007936274	AA600AU	With Personnel Winch, includes: AM100 tripod, AT200/120 Winch, AK0100 bag, mounting bracket and pulley
70007940581	AA610AU	With Type 3 SRL, includes: AM100 tripod, 3591002 Type 3 retrieval SRL, AK0100 bag, mounting bracket & pulley

**3M™ DBI-SALA®
ExoFit NEX™ Suspension
Harness with Chest Ascender**

Confined space: We have you covered.

This harness comes with Front, rear, side and abdominal Tech-Lite™ aluminium D-rings, Duo-Lok™ quick connect buckles, padded lower back/hip pad, chest ascender, tool & gear loops, non-slip hybrid comfort padding, REPEL™ technology webbing and a comfort guarantee.

Features and Benefits:

Front, rear, side and abdominal Tech-Lite™ aluminium D-rings

- Extremely lightweight alloy commonly used in military and aerospace offers a higher level of security and comfort

Integral chest ascender

- For efficient entry and exit

Duo-Lok™ quick-connect buckles

- Lightweight one-handed use with memory-fit web-lock ensures fast, non-slipping connections

Padded lower back/hip pad

- For additional user comfort

Gear loops

- For easy equipment positioning

Non-slip hybrid comfort padding

- Lightweight, moisture wicking, and breathable padding won't move or slip, keeping the wearer comfortable at all times

REPEL™ technology webbing

- Water repellent to reduce attraction of mould and dirt - also has up to 5 times more abrasion resistance.



3M Order Code	Model #	Description
70007928693	783S4010	Small
70007931101	783M4010	Medium
70007933883	783L4010	Large
70007948998	783XL4010	Extra Large

3M™ DBI-SALA® Rollgliss™ Pole Strap Connectors



3M Order Code	Model #	Description
70007927687	E90252559	2.5 m rope pole strap, lightweight rope grab adjuster with triple action karabiner, double action trigger snap hook

3M™ DBI-SALA® Self-Rescue

- Universal attachment
- EZ-Link™ D-ring
- 50 or 100 foot lengths
- Assisted-Rescue Ring & DBI-SALA
- Rescue Pole accessory
- Sealed Descent Device & Rope Spool



3M Order Code	Model #	Description
70007650362	3320030	Self-Rescue 50'
70007650370	3320031	Self-Rescue 100'
70007649497	3320037	Self-Rescue Training Unit
70007650040	8900299	Self-Rescue Pole

3M™ DBI-SALA® RescueMate™ Auto Lock Haul Kits



3M Order Code	Model #	Description
70007931309	8704103	4:1 mechanical advantage, 5 m working length
70007933347	8704104	4:1 mechanical advantage, 10 m working length
70007930392	8704105	4:1 mechanical advantage, 15 m working length
70007952271	8704106	4:1 mechanical advantage, 20 m working length
70007928206	8705104	6:1 mechanical advantage, 10 m working length
70007935151	8705105	6:1 mechanical advantage, 14 m working length
70007934246	8705106	6:1 mechanical advantage, 20 m working length
70007946497	8705110	6:1 mechanical advantage, 40 m working length

3M™ DBI-SALA® Rope Bags



3M Order Code	Model #	Description
70007932224	8700217	5 L, orange/black, extra small - fits approx. 7 m x 11 mm rope
70007931341	8700225	25 L, yellow, small - fits approx. 50 m x 11 mm or 25 m x 13 mm rope
70007925657	8700222	40 L, green, medium - fits approx. 100 m x 11 mm or 50 m x 13 mm rope
70007931358	8700224	60 L, red, extra large - fits approx. 300 m x 11 mm or 200 m x 13 mm rope

3M™ DBI-SALA® Rollgliss™ Karabiners Connectors



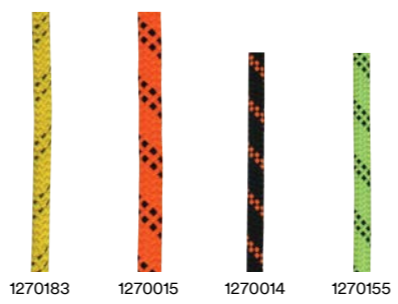
3M Order Code	Model #	Description
70007927372	R-105-S-CE	Oval Karabiner, 18 mm gate opening, screw gate, captive eye, steel
70007928859	8700167	Oval Karabiner, 19 mm gate opening, screw gate, aluminium
70007928776	R-308	Small Offset D Rescue Karabiner, 14 mm gate opening, autolock, captive eye, double action, steel
70007931721	8700200	Small Offset D Rescue Karabiner, 18 mm gate opening, autolock, triple action, aluminium
70007925079	2000117	Medium Offset D Fall Arrest Karabiner, 20 mm gate opening, autolock, captive eye, double action, steel
70007930228	8700198	Medium Offset D Rescue Karabiner, 22 mm gate opening, screw gate, aluminium
70007926986	R-113	Medium Offset D Fall Arrest Karabiner, 20 mm gate opening, autolock, triple action, captive eye, steel, 16 kN gate strength
70007930558	R-119	Medium Offset D Fall Arrest Karabiner, 20 mm gate opening, autolock, triple action, captive eye, stainless steel, 16 kN gate strength
70007931804	8700201	Large Offset D Rescue Karabiner, 27 mm gate opening, screw gate, steel
70007934030	2000172	Large Offset D Rescue Karabiner, 27 mm gate opening, autolock, triple action, stainless steel
70007449591	2000025	Medium Parabiner Fall Arrest Karabiner, 19 mm gate opening, autolock, triple action, aluminium, 16 kN gate strength

3M™ DBI-SALA® Double Stop Descenders



3M Order Code	Model #	Description
70007930921	8700388	Double stop descender, anodised gold/blue aluminium, suits 12.5 - 13.0 mm rope

3M™ DBI-SALA® Rope and Cord



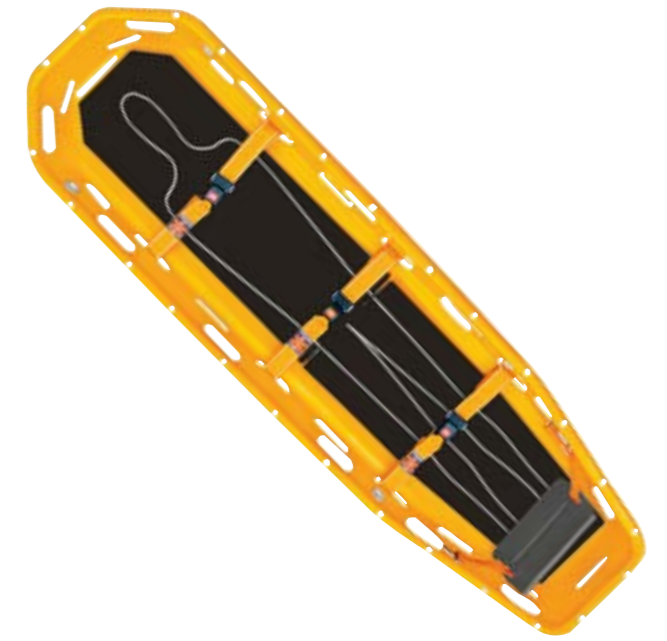
3M Order Code	Model #	Description
70007955043	1270183	13 mm, yellow with black fleck, per metre
70007934725	1270015	13 mm, orange with black fleck, per metre
70007935029	1270014	11 mm, navy with orange fleck, per metre
70007935037	1270155	11 mm, green with black fleck, per metre

3M™ DBI-SALA® Spine Splint



3M Order Code	Model #	Description
70007940847	8700241	Oregon Spine Splint

3M™ DBI-SALA® Stretchers



3M Order Code	Model #	Description
70007945929	8700546	Shell Basket Stretcher

3M™ DBI-SALA® FlexiGuard™ Solutions



C-Frame Rail Fall Arrest System

A versatile system designed to be moved manually or with the use of a tow bar and service vehicle to provide safe access, horizontal movement and total fall protection on or near sensitive equipment for up to two users.



A-Frame Rail Fall Arrest System

A secure anchor point in a portable structure giving the worker increased coverage and protection. Ideal solution for a workshop environment where space is limited. System is designed to be moved manually, provides horizontal movement and total fall protection for up to two users.



Counterweight Rail Fall Arrest System

Designed as a versatile solution to provide an overhead anchor point for up to two users while working at heights. These systems are designed to be counterbalanced by concrete allowing for close positioning to the work surface without obstructing the equipment being accessed.



SafRig™ with Counterweight Base

The Counterweighted SafRig is a portable solution for indoor and outdoor maintenance where mobility and worker safety are key. The system incorporates a fixed height 360° rotating jib with the capacity to provide fall protection for one person. Forklift pockets are located on two sides of the base as well as the ability of fitting additional lifting rings to each corner to ensure ease of mobility and placement from job site to job site.



Engineered Modular Unit with Counterweight Base

The Counterweighted Engineered Modular Unit is a portable solution for indoor and outdoor maintenance where mobility and worker safety are key. The system incorporates an adjustable height 360° rotating jib with the capacity to provide fall protection for one person. Forklift pockets are located on two sides of the base as well as the ability of fitting additional lifting rings to each corner to ensure ease of mobility and placement from job site to job site.



Ladder Fall Arrest System

Adjustable in height that provides easy access to elevated work areas of different heights such as fuselage, wing and general maintenance areas with fall protection from the ground up for multiple users, for the duration of the work being performed.



Portable Tanker Access Ladder System - Fall Arrest

The Portable Tanker Access Ladder System (PTALS) provides easy access to elevated work areas with fall arrest rated tie-off for one operator from the ground up for the duration of the work being performed. System configurations may include but not limited to guardrails, SRL's or confined space entry equipment.



Portable Tanker Access Ladder System - Work Positioning

The Portable Tanker Access Ladder System (PTALS) combines easy access to elevated work areas with fall protection and work positioning for one operator for the duration of the work being performed. System configurations may include but not limited to guardrails or confined space entry equipment.

Each FlexiGuard solution is driven by our customers' needs and is dependent on the industry, environment and specific design constraints, including government standards. For complete peace of mind DBI-SALA's FlexiGuard Access Systems offer a complete solution that is ready to use.

Due to the technical nature of all these speciality systems and applications, a degree of customisation is required. Please contact 3M Fall Protection for more information.

3M™ DBI-SALA® Engineered Systems

Our range of engineered horizontal systems provide a choice of fall protection solutions that allow users to most effectively resolve the risks associated with work at height in a wide range of applications, and comply with workplace safety regulations.

RoofSafe™ Cable System

The system attaches to roof sheeting and can span up to 12 m between supports to provide continuous hands-free access and protection.



RoofSafe™ Rail System

The only direct to roof rail system that can facilitate changes in direction and roof slopes, ensuring continuous safe roof access for fall arrest and rope / suspended access applications.



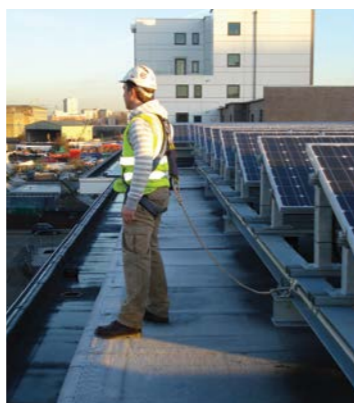
Uni-8™ / Evolution™ System

This system attaches to the structure and is well suited to modern building projects and a wide range of industrial safety applications.



UniRail™ System

Can be fitted to a wide range of structures and can support multiple workers for both fall arrest and rope / suspended access applications.



The Uni-8™ Overhead System

This quality safety solution can support heavy fall arrest and controlled rate descent devices, ensuring free and unhindered movement for the worker when carrying out work at height.

3M™ DBI-SALA® Accessories



RFID retrofit tags are also available for use on all brands of harnesses, lanyards, self-retracting lifelines or other equipment such as gas detectors, tools, ladders & fire extinguishers that require inspection.

3M Order Code	Model #	Description
70007944864	AK145	Lanyard Cover
70007930715	E810-DUAL	Yoke Harness Extension, dual, for rescue
70007933834	E810-SINGLE	Yoke Harness Extension, single, for rescue
70007925780	E831	Dorsal Extension, retrofit
70007925004	E838	Utility Tool Pouch - 2 Pocket
70007938817	E839	Lanyard Stowage Points
70007400479	1000570	Derrick Belt, for use with ExoFit NEX™ Derrickmans harness
70007432340	1150011	Suspension Seat, for use with ExoFit NEX™ climbing, Sit and Derrickmans harness
70007424396	1150414	Suspension Seat, for use with any brand/style of harness
70007433355	1150174	Harness Hydration System
70007925137	9501403	Suspension Trauma Straps
70007607438	9501207	Delta™ Comfort Back Pad
70804401902	CL002	Custom Harness Labels
70007925848	G029-10	Harness Storage Bag
70007934501	G029-15	Harness Storage Duffel Bag
70007937215	G029-NEX	Harness Storage Backpack
70007932224	8700217	Equipment Duffel Bag, small
70007931291	8700547	Equipment Duffel Bag, standard
70007929493	1900-0000	Equipment/Kit Storage Bag, standard
70007927224	G029-3	Equipment/Kit Storage Bag, large

3M™ Protecta® Accessories

3M Order Code	Model #	Description
70007781621	AK043	Duffel Bag, 300 mm x 500 mm
70007939138	AK066AU-BKP	Roofers Kit Backpack
70007947529	G029-PRO	Harness Storage Bag
70007938817	E839	Lanyard Stowage Points



Contact us for more information or to speak with one of our Systems Specialists

**3M™ DBI-SALA®
D-Rings**



3M Order Code	Model #	Description
70007448809	1500003	D-Ring 13 X 57 mm, 0.9 kg load rating, 10 pack
70007448817	1500004	D-Ring 13 X 57 mm, 0.9 kg load rating, 100 pack
70007448825	1500005	D-Ring 13 X 57 mm, Non-conductive, 0.9 kg load rating, 10 pack
70007448833	1500006	D-Ring 13 X 57 mm, Non-conductive, 0.9 kg load rating, 100 pack
70007448841	1500007	D-Ring 25 X 89 mm, 2.3 kg load rating, 10 pack
70007437653	1500008	D-Ring 25 X 89 mm, 2.3 kg load rating, 50 pack
70007448858	1500009	D-Ring Attachment with Cord Loop, 2.3kg Capacity, 10 Pack
70007448783	1500001	Dual D-Ring Small, 0.9 kg load rating, 10 pack
70007448791	1500002	Dual D-Ring Small, 0.9 kg load rating, 100 pack

**3M™ DBI-SALA®
Heavy Duty
Quick Wrap Tape**



3M Order Code	Model #	Description
70804436932	1500168	Blue 25.4mm Wide, 2.7m Roll
70804440173	1500169	Blue 25.4mm Wide, 2.7m Roll (10 Rolls)
70804440181	1500170	Blue 25.4mm Wide, 2.7m Roll (240 Roll Case)
70804440199	1500171	Blue 25.4mm Wide, 5.5m Roll
70804440207	1500172	Blue 25.4mm Wide, 5.5m Roll (10 Rolls)
70804440215	1500173	Blue 25.4mm Wide, 5.5m Roll (120 Roll Case)
70804436924	1500174	Yellow 25.4mm Wide, 2.7m Roll
70804440223	1500175	Yellow 25.4mm Wide, 2.7m Roll (10 Rolls)
70804440231	1500176	Yellow 25.4mm Wide, 2.7m Roll (240 Roll Case)

**3M™ DBI-SALA®
Quick Spins**



3M Order Code	Model #	Description
70007448932	1500027	Small, 15 mm diameter, 0.5 kg load rating, 10 pack
70007437760	1500028	Medium, 20 mm diameter, 0.5 kg load rating, 10 pack
70007448940	1500029	Large, 25 mm diameter, 0.5 kg load rating, 10 pack
70007437778	1500030	Extra Large, 31 mm diameter, 0.5 kg load rating, 10 pack
70007448957	1500031	Pen Holder, 8 mm diameter, 10 pack
70007448965	1500032	Pen Holder with Coil, 8 mm diameter, 10 pack
70007437786	1500033	Permanent Marker Holder, 13 mm diameter, 10 pack
70007448973	1500034	Permanent Marker Holder with Coil, 13 mm diameter, 10 pack

**3M™ DBI-SALA®
Micro D-Ring**



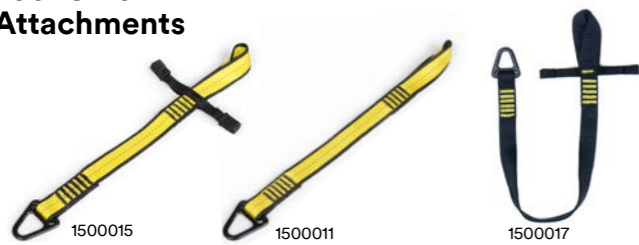
3M Order Code	Model #	Description
70007437661	1500010	10 pack

**3M™ DBI-SALA®
Micro D-Ring**



3M Order Code	Model #	Description
70007448916	1500024	Small, 19 mm diameter, 0.9 kg load rating, 25 pack
70007448924	1500025	Medium, 25 mm diameter, 0.9 kg load rating, 25 pack
70007437752	1500026	Large, 38 mm diameter, 0.9 kg load rating, 25 pack

**3M™ DBI-SALA®
Tool Cinch
Attachments**



3M Order Code	Model #	Description
70007437695	1500015	V-Ring attachment point, 2 stabilisation wings, 15.9 kg load rating
70007437703	1500016	V-Ring attachment point, 2 stabilisation wings, 15.9 kg load rating, 10 pack
70007448874	1500013	V-Ring attachment point, stabilisation wing, 15.9 kg load rating
70007437687	1500014	V-Ring attachment point, stabilisation wing, 15.9 kg load rating, 10 pack
70007448866	1500011	V-Ring attachment point, 15.9 kg load rating
70007437679	1500012	V-Ring attachment point, 15.9 kg load rating, 10 pack
70007448882	1500017	V-Ring attachment point, 2 stabilisation wings, 36.3 kg
70007437711	1500018	V-Ring attachment point, 2 stabilisation wings, 36.3 kg load rating

**3M™ DBI-SALA®
Heat Shrink**



3M Order Code	Model #	Description
70007437729	1500019	19 mm X 45 mm, 25 pack
70007437737	1500020	25 mm X 45 mm, 25 pack
70007448890	1500021	38 mm X 51 mm, 25 pack
70007437745	1500022	51 mm x 102 mm, 10 pack
70007448908	1500023	76 mm x 102 mm, 10 pack

**3M™ DBI-SALA®
D-Ring Cord**



3M Order Code	Model #	Description
70007448858	1500009	2.3 kg load rating, 10 pack

**3M™ DBI-SALA®
Bungee Tethers**



3M Order Code	Model #	Description
70007449047	1500047	Hook2Loop Bungee Tether, 6.8 kg load rating
70007449054	1500048	Hook2Loop Bungee Tether, 6.8 kg load rating, 10 Pack
70007449062	1500049	Medium Duty Hook2Loop Bungee Tether, 15.9 kg load rating

**3M™ DBI-SALA®
Retractor**



3M Order Code	Model #	Description
70007437935	1500069	Steel Cable Retractor, 0.7 kg load rating

**3M™ DBI-SALA®
Coil Tethers**



3M Order Code	Model #	Description
70804431230	1500159	Hook2Hook Coil Tether, 2.3 kg load rating
70804431248	1500160	Hook2Hook Coil Tether, 2.3 kg load rating, 10 pack
70007437927	1500067	Trigger2Trigger Coil Tether, 2.3 kg load rating
70007449161	1500068	Trigger2Trigger Coil Tether, 2.3 kg load rating, 10 pack
70007449120	1500059	Clip2Clip Coil Tether, 0.9 kg load rating, 10 pack
70007449153	1500065	Hook2Quick Ring Coil Tether with Tail, 0.9 kg load rating
70007437919	1500066	Hook2Quick Ring Coil Tether with Tail, 0.9 kg load rating, 10 pack
70007437885	1500060	Clip2Loop Coil Tether, 0.9 kg load rating, 10 pack
70804486085	1500178	Hard Hat Tether, 0.9 kg load rating, 10 pack
70804486093	1500179	Hard Hat Tether, 0.9 kg load rating, 100 pack

**3M™ DBI-SALA®
 Trigger2Trigger
 Lanyards**



3M Order Code	Model #	Description
70007437851	1500053	0.3 m, 4.5 kg load rating
70007449096	1500054	0.3 m, 4.5 kg load rating, 10 pack
70007449104	1500055	0.6 m, 4.5 kg load rating
70007449112	1500056	0.6 m, 4.5 kg load rating, 10 pack
70007437869	1500057	0.9 m, 4.5 kg load rating
70007437877	1500058	0.9 m, 4.5 kg load rating, 10 pack

**3M™ DBI-SALA®
 Hook2Loop
 & Hook2Rail
 Lanyards**



3M Order Code	Model #	Description
70007449070	1500050	Medium Duty, 15.9 kg load rating
70007449088	1500051	Heavy Duty, 36.3 load rating

3M Order Code	Model #	Description
70007437844	1500052	Heavy Duty, 36.3 kg load rating

**3M™ DBI-SALA®
 Single and Dual
 Tool Holsters**



3M Order Code	Model #	Description
70007438974	1500103	Single Tool Holster, harness attachment
70007438982	1500104	Single Tool Holster with retractor, harness attachment
70007449310	1500101	Single Tool Holster, belt attachment
70007449328	1500102	Single Tool Holster with retractor, belt attachment
70007438990	1500105	Extra-Deep Single Tool Holster, belt attachment
70007449344	1500108	Dual Tool Holster, harness attachment
70007449351	1500109	Dual Tool Holster with retractors, harness attachment
70007449336	1500106	Dual Tool Holster, belt attachment
70007439006	1500107	Dual Tool Holster with retractors, belt attachment

**3M™ DBI-SALA®
 Tape Measure
 Holster**



3M Order Code	Model #	Description
70007438941	1500098	Tape Measure Retractor Holster
70007438958	1500099	Tape Measure Sleeve
70007438966	1500100	Tape Measure Retractor Holster and Sleeve Combo

**3M™ DBI-SALA®
 Pouch Holster**



3M Order Code	Model #	Description
70007438917	1500095	Pouch Holster with Retractor

**3M™ DBI-SALA®
 Scaffold Wrench
 Holster**



3M Order Code	Model #	Description
70007438925	1500096	Scaffold Wrench Holster with Retractor
70007438933	1500097	Scaffold Wrench Holster with Retractor and Hook2Loop Bungee Tether

**3M™ DBI-SALA®
 Hammer Holster**



3M Order Code	Model #	Description
70007438909	1500093	Hammer Holster
70007449302	1500094	Hammer Holster & Hook2Quick Ring Coil Tether

**3M™ DBI-SALA®
 Radio Holster**



3M Order Code	Model #	Description
70007438883	1500088	Adjustable Radio Holster
70007438891	1500089	Adjustable Radio Holster, Clip2Loop Coil Tether and Micro D-Ring

3M Order Code	Model #	Description
70007449286	1500091	Spray Can / Bottle Holster
70007449294	1500092	Spray Can / Bottle Holster and Clip2Clip Coil Tether

3M Order Code	Model #	Description
70007449278	1500090	Drill Battery Holster/Sleeve

**3M™ DBI-SALA®
 Belt Loops**



3M Order Code	Model #	Description
70007449401	1500115	Belt Loop with D-Ring, 2.3 kg load rating
70007439022	1500116	Belt Loop with D-Ring, 2.3 kg load rating, 10 pack
70007439030	1500117	Belt Loop with Trigger, 2.3 kg load rating
70007439048	1500118	Belt Loop with Trigger, 2.3 kg load rating, 10 pack

**3M™ DBI-SALA®
 Utility &
 Inspection
 Pouches**



3M Order Code	Model #	Description
70007439097	1500130	Utility Pouch with Zipper Closure
70007449484	1500132	Utility Pouch

3M Order Code	Model #	Description
70007439105	1500131	Meter Pouch

**3M™ DBI-SALA®
 Comfort & Utility
 Tool Belt**



3M Order Code	Model #	Description
70007449369	1500110	Comfort Tool Belt, small - medium
70007449377	1500111	Comfort Tool Belt, large - extra large
70007439014	1500112	Comfort Tool Belt, 2 extra large - 3 extra large

3M Order Code	Model #	Description
70007449385	1500113	Utility Tool Belt, small - large
70007449393	1500114	Utility Tool Belt, extra large - 3 extra large

**3M™ DBI-SALA®
 Small Part
 Pouches**



3M Order Code	Model #	Description
70007449435	1500122	Small Parts Pouch, vinyl yellow
70007439055	1500119	Small Parts Pouch, canvas black
70007449419	1500120	Small Parts Pouch, canvas camo
70007449427	1500121	Small Parts Pouch, canvas orange
70007449443	1500123	Small Parts Pouch, extra deep canvas black

**3M™ DBI-SALA®
 Tool Pouches**



3M Order Code	Model #	Description
70007439063	1500124	Standard Tool Pouch
70007449450	1500125	Standard Tool Pouch with 2 Retractors
70007439071	1500126	Standard Tool Pouch with 2 Triggers
70007439089	1500127	Extra-deep Tool Pouch
70007449468	1500128	Extra-deep Tool Pouch with 2 Retractors
70007449476	1500129	Extra-deep Tool Pouch with 2 Triggers

3M™ DBI-SALA® Standard Safe Buckets



1500134

3M Order Code	Model #	Description
70007439121	1500134	Canvas with Hook and Loop closure, 45.4 kg load rating
70007439113	1500133	Canvas with Drawstring closure, 45.4 kg load rating
70007439162	1500140	Vinyl with Hook and Loop closure, 113.4 kg load rating
70007439154	1500139	Vinyl with Drawstring closure, 113.4 kg load rating

3M™ DBI-SALA® Pullaway Wristbands



1500070

1500076

3M Order Code	Model #	Description
70007437943	1500070	Small, 2.3 kg load rating
70007449179	1500071	Small, 2.3 kg load rating, 10 pack
70007449187	1500072	Medium, 2.3 kg load rating
70007437950	1500073	Medium, 2.3 kg load rating, 10 pack
70007449195	1500074	Large, 2.3 kg load rating
70007449203	1500075	Large, 2.3 kg load rating, 10 pack
70007449211	1500076	Small (Slim), 2.3 kg load rating
70007449229	1500077	Small (Slim), 2.3 kg load rating, 10 pack
70007437968	1500078	Medium (Slim), 2.3 kg load rating
70007437976	1500079	Medium (Slim), 2.3 kg load rating, 10 pack
70007449237	1500080	Large (Slim), 2.3 kg load rating
70007449245	1500081	Large (Slim), 2.3 kg load rating, 10 pack

3M™ DBI-SALA® Safe Bucket Insert, 5 Gallon Safe Bucket & Long Safe Buckets



1500141

1500136

Safe Bucket Insert

3M Order Code	Model #	Description
70007449518	1500141	Hard Body Safe Bucket Insert

5 Gallon Safe Bucket

3M Order Code	Model #	Description
70007439139	1500135	Canvas with Hook and Loop closure, 45.4 kg load rating

Long Safe Buckets

3M Order Code	Model #	Description
70007439147	1500136	Standard, 1.2 m, Canvas with Hook and Loop closure, 45.4 kg load rating
70007449492	1500137	Medium, 1.8 m, Canvas with Hook and Loop closure, 45.4 kg load rating
70007449500	1500138	Tall, 3.1 m, Canvas with Hook and Loop closure, 45.4 kg load rating

3M™ DBI-SALA® Adjustable Wristbands



1500084

1500086

3M Order Code	Model #	Description
70007449252	1500082	Adjustable Wristband, 2.3 kg load rating
70007437984	1500083	Adjustable Wristband, 2.3 kg load rating, 10 pack
70007437992	1500084	Adjustable Wristband with Cord, 2.3 kg load rating
70007449260	1500085	Adjustable Wristband with Cord, 2.3 kg load rating, 10 pack
70007438008	1500086	Adjustable Wristband with Retractor, 0.7 kg load rating
70007438875	1500087	Adjustable Wristband with Retractor, 0.7 kg load rating, 10 pack

Next Day Delivery

3M Order Code	Model #	Description	Page
70007440707	2101630	3M™ DBI-SALA® Structural Mount Anchors D-ring with anchorage plate	6
70007441093	2104560	3M™ DBI-SALA® Concrete Mount Anchors Bolt on, with swivel D-ring	6
70007928024	L4543	3M™ DBI-SALA® Roof Mount Anchors Purlin mounted for steel roofs	6
70007925426	L4544	3M™ DBI-SALA® Roof Mount Anchors Truss mounted for steel or tiled roofs	6
70007938395	L4550	3M™ DBI-SALA® Roof Mount Anchors Purlin mounted, for flat pan applications	6
70007937967	L4551	3M™ DBI-SALA® Roof Mount Anchors Purlin mounted, for corrugated iron applications	6
70007932786	L4552	3M™ DBI-SALA® Roof Mount Anchors Purlin mounted, for spandek applications	6
70007951026	2100191	3M™ DBI-SALA® Roof Mount Anchors Anchor on the Go™, for sheet metal roofs	6
70007440806	2103143	3M™ DBI-SALA® Beam Anchors Beam trolley, adjustable	6
70007452413	2104700	3M™ DBI-SALA® Beam Anchors Glyder™ 2 sliding beam anchor, adjustable	6
70007442091	2108406	3M™ DBI-SALA® Beam Anchors Fixed beam anchor, adjustable	6
70007441051	2104530	3M™ DBI-SALA® First-Man-Up™ Systems 1.8 - 3.6 m working length	7
70007488128	7605061	EZ-Line™ Retractable Horizontal Lifeline Wire Cable System 18 m	7
70007925731	E849-010	Tie-Off Adaptor with Interlocking Rings 1 m	7
70007925566	E849-015	Tie-Off Adaptor with Interlocking Rings 1.5 m	7
70007925574	E849-020	Tie-Off Adaptor with Interlocking Rings 2 m	7
70007427167	1200101	PRO-Line™ Temporary Horizontal Lifeline System 18 m, webbing, up to 2 users	8
70007649455	2199938	Dual Ring Tie-Off Adaptor RailDog™ Hi-Vis Sliding Rail Anchor	8
70007925673	603S2018	ExoFit NEX™ Riggers Harness Small	13
70007925467	603M2018	ExoFit NEX™ Riggers Harness Medium	13
70007926127	603L2018	ExoFit NEX™ Riggers Harness Large	13
70007938429	603XL2018	ExoFit NEX™ Riggers Harness Extra Large	13
70007929378	623S2018	ExoFit NEX™ Confined Space Harness Small	13
70007926010	623M2018	ExoFit NEX™ Confined Space Harness Medium	13
70007925798	623L2018	ExoFit NEX™ Confined Space Harness Large	13
70007925764	623XL2018	ExoFit NEX™ Confined Space Harness Extra Large	13
70007935102	653S4016	ExoFit NEX™ Tower Workers Harness Small	13
70007926366	653M4016	ExoFit NEX™ Tower Workers Harness Medium	13
70007931101	783M4010	ExoFit NEX™ Suspension Harness with Chest Ascender Medium	13
70007926416	803S0018	Delta™ Riggers Harness Small	16
70007925822	803M0018	Delta™ Riggers Harness Medium	16
70007925707	803L0018	Delta™ Riggers Harness Large	16
70007925046	803XL0018	Delta™ Riggers Harness Extra Large	16
70007925855	823M0018	Delta™ All Purpose Harness Medium	16
70007925616	823L0018	Delta™ All Purpose Harness Large	16
70007927141	823XL0018	Delta™ All Purpose Harness Extra Large	16
70007925160	853M0018	Delta™ Tower Workers Harness Medium	16
70007927455	833L2018	Delta™ Riggers Comfort Harness Large	17
70007931218	833M2018	Delta™ Riggers Comfort Harness Medium	17
70007927729	320M2066NK	Delta™ Welders Harness* Medium	17
70007930459	320L2066NK	Delta™ Welders Harness* Large	17
70007930988	1900-0004	3M™ DBI-SALA® Fall Protection Construction Workers Kit	18
70007928529	1900-0005	3M™ DBI-SALA® Fall Protection Professional Roof Workers Kit	18
70007928412	E100M-0051	3M™ DBI-SALA® Miners Belts Medium, with rear D-ring, battery pack and self rescue straps with velcro, reflective tape on rear	18
70007942058	E112M-0033	3M™ DBI-SALA® Miners Belts Medium, with detachable battery pack and self rescue straps, 2 front D-rings, reflective tape along entire length of belt	18
70007950937	AB123M	3M™ Protecta® Pro Riggers Harness Medium	20
70007928479	AA400AU	3M™ Protecta® Fall Protection Pro Roof Workers Kit	21
AT010621582	1390062A	3M™ Protecta® First™ Construction Harness Medium	23
AT010621574	1390061A	3M™ Protecta® First™ Industrial Harness Medium	23
AT010621590	1390063A	3M™ Protecta® First™ Industrial harness with integral lanyard w/snap hook	23
AT010621608	1390064A	3M™ Protecta® First™ Industrial harness with integral lanyard w/scaffold hook	23
70007929576	AA1020AU	3M™ Protecta® First™ Construction Workers Kit	24
70007925012	AA1000AU	3M™ Protecta® First™ Roof Workers Kit	24
70007925020	R-105-S	3M™ Protecta® Karabiners Double action, screw gate, 18 mm opening	26
70007927372	R-105-S-CE	3M™ Protecta® Karabiners Double action, screw gate, 18 mm opening with captive eye	26
70007928057	R-517	3M™ Protecta® Karabiners Double action, screw gate, 26 mm gate opening, 16 kN	26
70007925079	2000117	3M™ DBI-SALA® Karabiners Double Action Autolock 20 mm gate opening with captive eye, 16 kN	26
70007928651	2000114	3M™ DBI-SALA® Karabiners Double Action Autolock 54 mm gate opening with captive eye, 16 kN	26
70007926986	R-113	3M™ DBI-SALA® Karabiners Triple Action Autolock 20 mm gate opening with captive eye, 16 kN	26
70007930558	R-119	3M™ DBI-SALA® Karabiners Triple Action Autolock 20 mm gate opening with captive eye (stainless steel), 16 kN	26
70007927653	E601-020	3M™ DBI-SALA® Pole Straps Webbing 2 m Pole Strap with Double Action Snap Hooks & Friction Adjuster	27
70007928008	E613-B-020-56-56	3M™ DBI-SALA® Pole Straps Webbing 2 m Pole Strap with Light Weight Aluminium Double Action Snap Hooks & Friction & Adjuster Plate	27
70007928750	Z90203634E	3M™ DBI-SALA® EZ-Stop™ Shock Absorbing Lanyards Webbing Single tail, elasticated 2.0 m overall length	27
70007927133	Z60203634E	3M™ DBI-SALA® EZ-Stop™ Shock Absorbing Lanyards Webbing Double tail, elasticated rope 2.0 m overall length	27
70007925608	Z11200909	3M™ DBI-SALA® force2™ Shock Absorbing Lanyards Webbing Range Single tail adjustable 0, 2.0 m overall length	29
70007925418	Z12202519E	3M™ DBI-SALA® force2™ Shock Absorbing Lanyards Webbing Range Twin tail, elasticated, 2.0 m overall length	29
70007929956	Z11204545CR	3M™ DBI-SALA® force2™ Shock Absorbing Lanyards Cable & Rope Range Cut resistant, Single tail, 2.0 m overall length	29
AT010621624		3M™ Protecta® First™ Shock Absorbing Lanyard Single Tail, 2m adjustable with snap hook on both ends	30
AT010621616		3M™ Protecta® First™ Shock Absorbing Lanyard Twin tail, 2m with scaffold hooks on both ends	30
70007940599	AE529E/3AU	3M™ Protecta® Pro Shock Absorbing Lanyards Single tail, elasticated, 2 x snap hooks, 2.0 m	30
70007926879	AE529E/5AU	3M™ Protecta® Pro Shock Absorbing Lanyards Double tail, elasticated, 1 x snap hook, 2 x scaffold hooks, 2.0 m	30
70007456471	3500255	3M™ DBI-SALA® Nano-Lok™ LE Self Retracting Lifelines 2.4 m twin cable lifelines, aluminium scaffold hooks	32
70007455226	3101330	3M™ DBI-SALA® Nano-Lok™ Self Retracting Lifelines 1.8 m single webbing lifeline with quick connector anchorage connection and steel snap hook. Also available: with stainless steel or swivel snap hook	32
70007455234	3101339	3M™ DBI-SALA® Nano-Lok™ Self Retracting Lifelines 1.8 m Single webbing lifeline with steel triple action karabiners. Also available: with stainless steel triple action karabiners	32
70007931986	3101342	3M™ DBI-SALA® Nano-Lok™ Self Retracting Lifelines 1.8 m single webbing lifeline with steel triple action karabiner connection and steel scaffold hook on lifeline. Also available: with stainless steel triple action karabiner and aluminium scaffold hook	32
70007455242	3101345	3M™ DBI-SALA® Nano-Lok™ Self Retracting Lifelines 1.8 m twin webbing lifelines with quick connector anchorage connection and two steel scaffold hooks. Also available: with aluminium scaffold hook	32
70007463279	3504555	3M™ DBI-SALA® Ultra-Lok™ RSQ SRL 15 m stainless steel cable lifeline and swivel snap hook, dual mode SRL's with rescue function (assisted rescue tool and First-Man-Up™ pole available separately if required)	33
70007456570	3504430	3M™ DBI-SALA® Ultra-Lok™ SRL's 10 m galvanised cable lifeline	33
70007925020	R-105-S	3M™ Protecta® Karabiners Double action, screw gate, 18 mm opening	34
70007937918	AJ592	3M™ Protecta® Hooks Double action, anchor hook, 89 mm opening (Sold separately)	34
70007454393	3100447	3M™ Protecta® Rebel™ Personal Self Retracting Lifelines 3.3 m, webbing	36
70007454401	3100448	3M™ Protecta® Rebel™ Personal Self Retracting Lifelines 6 m, webbing	36
70007458675	3590520	3M™ Protecta® Rebel™ Self Retracting Lifelines 6 m, galvanised cable, thermoplastic housing	36
70007464996	3590521	3M™ Protecta® Rebel™ Self Retracting Lifelines 10 m, galvanised cable, thermoplastic housing	36
70007460440	3590570	3M™ Protecta® Rebel™ Self Retracting Lifelines 15 m, galvanised cable, thermoplastic housing	36