

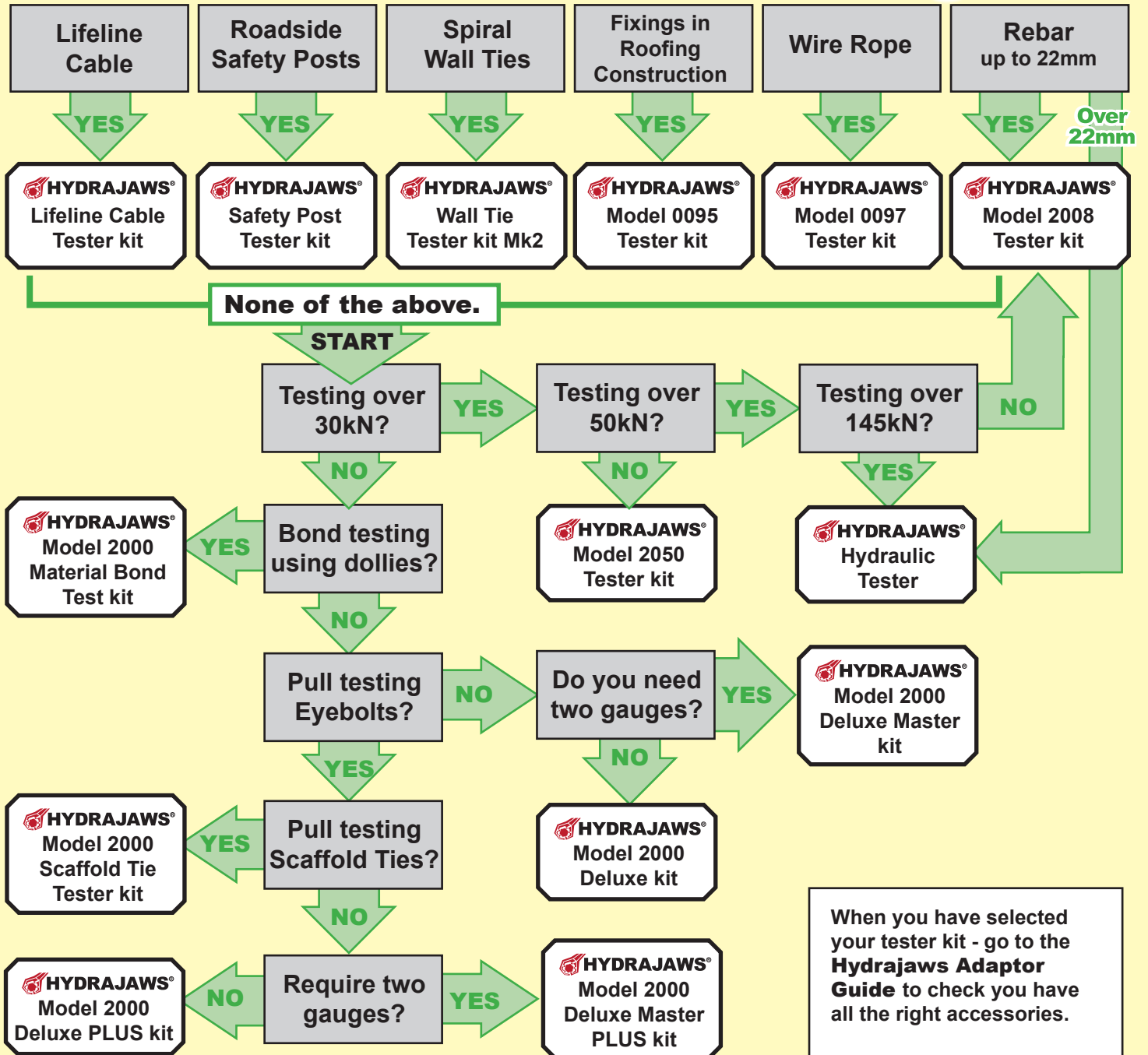


1. Select what you are testing and what load you are testing up to.
2. Follow the flow chart to find the right product.
3. Check it contains the correct accessories using the Hydrajaws Adaptor Guide.

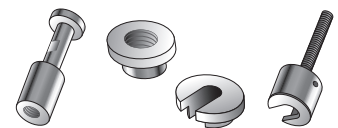
If unsure, please call us at Hydrajaws and we will advise you.



What are you testing?



When you have selected your tester kit - go to the **Hydrajaws Adaptor Guide** to check you have all the right accessories.



Select a gauge that is within your target loads range and decide whether to upgrade to Digital or Bluetooth Digital.





1. Check the adaptors in your kit will fit the test fixing using the chart below.

FIXING ADAPTOR	Bolt 	Threaded fixings 	Threaded Remedial wall ties 	Eye bolt/ Ring bolt 	ETIC (insulation) fixings
	 Bolt Test Adaptor	 Threaded Button Adaptor + Bolt Test Adaptor	 Threaded Rod Adaptor	 Clevis Adaptor	 Insulation Adaptor
	OR	OR			
	 Slotted Button Adaptor + Bolt Test Adaptor	 Threaded Stud Adaptor			

Ensure adaptor size will match the fixing size.

If your test fixing is not shown then please call for advice.

2. If more height or width is needed for a test - check our extension legs and bridges accessories.

Footprints for most of our testers and bridges are available online at www.hydrajaws.co.uk.

