

HORIZONTAL LIFELINE

FrogLine Concrete END Anchor



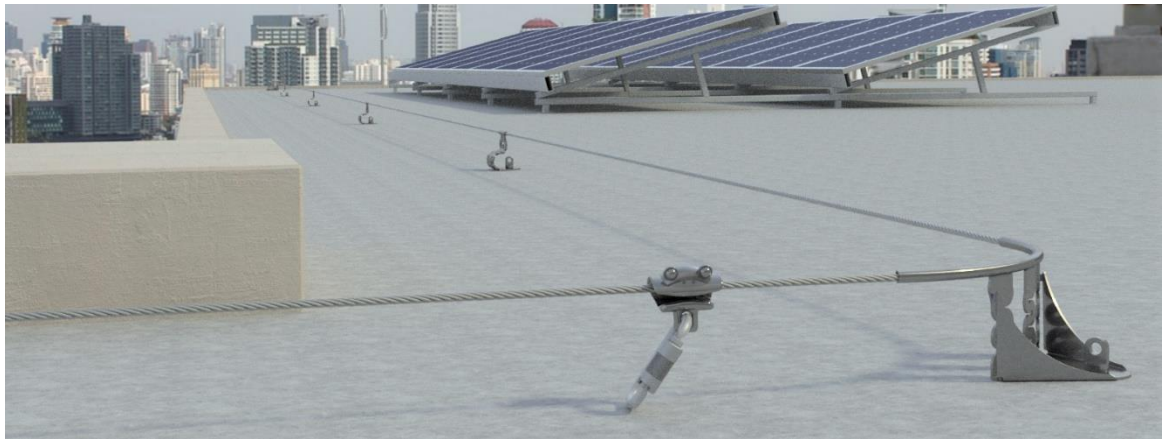
FrogLine
In Use



Terms and
Conditions



Installation
Handbook



- Energy absorbing lifeline END anchor point.
- Specifically for use with permanent horizontal height safety lifeline systems into concrete.
- Must be chemically fastened.
- Equipped with an engineered energy absorbing region to minimise loads on users and structures in the event of a fall.
- Continuous connection with 8mm stainless steel cable, utilising the Frogline Shuttle System, upto four users per system, two per span.

WHAT AM I USED FOR?

A height safety system anchor point designed to be mounted into a concrete structure as part of a horizontal lifeline system as attachment points for the cable to start and terminate at.

The building or structure for the anchorages must be assessed by an engineer, unless it is clear to a competent person that the structure is adequate. SEE SYSTEM INFORMATION FOR SITE SPECIFIC USE.



STANDARDS

The FrogLine has been tested and manufactured in accordance with AS/NZS 1891.2, ANSI Z359.6-2009, EN 795:2012 and CEN/TS 16415:2013.

COMPLETE UNIT - PRODUCT CODE: STAT.FROGCON002

Product Parts	Description	Qty	Weight	Material
FROGLINE END	FrogLine Base End	1	.693g	316 Stainless Steel
FROGLINE BOLT	FrogLine Eyebolt M16 35mm	1	.125g	316 Stainless Steel
CON-INSERT	ConcreteLink Insert M16 90mm	1	.217g	316 Stainless Steel
			1.035g	



© 2018, SafetyLink Pty Ltd, Australia.

Patents: SafetyLink Pty Ltd has a multitude of patents, patents pending, design applications, trademarks and copyrighted documents both lodged and issued. Should you wish to know the progress of our intellectual property on a specific product please email us on ip@safetylink.com and quote the product code.

Version 05.18